



# Hydro Tech Environmental, Corp.

Main Office  
77 Arkay Drive, Suite G  
Hauppauge, New York 11788  
T (631) 462-5866 • F (631) 462-5877

NYC Office  
15 Ocean Avenue, 2<sup>nd</sup> Floor  
Brooklyn, New York 11225  
T (718) 636-0800 • F (718) 636-0900

WWW.HYDROTECHENVIRONMENTAL.COM

---

August 1, 2012

New York City Office of Environmental Remediation  
City Brownfield Cleanup Program  
c/o Shaminder Chawla  
100 Gold Street, 2<sup>nd</sup> Floor  
New York, NY 10038

**Re: 12CVCP068K & 12CVCP069K  
249 North 7th Street (Site A) & 248 North 8th Street (Site B)  
Remedial Action Work Plan (RAWP) Stipulation List**

Dear Mr. Chawla:

Hydro Tech hereby submits a Remedial Action Work Plan (RAWP) Stipulation List for the subject site to the New York City Office of Environmental Remediation (NYCOER) on behalf of North 7th Management, LLC. This letter serves as an addendum to the RAWP to stipulate additional content, requirements and procedures that will be followed during the site remediation. The contents of this list are added to the RAWP and will supersede the content in the RAWP where there is a conflict in purpose or intent. The additional requirements/procedures include the following:

*Stipulation List*

1. The criterion attached in **Addendum 1** will be utilized if petroleum-containing tanks or vessels are identified during the remedial action or subsequent redevelopment excavation activities. All petroleum spills will be reported to the NYSDEC hotline as required by applicable laws and regulations. This contingency plan is designed for heating oil tanks and other small or moderately sized storage vessels. If larger tanks, such as gasoline storage tanks are identified, OER will be notified before this criterion is utilized.
2. The quality assurance/quality control program (QA/QC) for collection of end point samples for this remedial action will include the following provisions:
  - New York State ELAP certified labs will be utilized for chemical analysis
  - Data summary tables will be prepared that include all data entries (including non-detect results) and will be presented in the Remedial Action Report (RAR).

- QA/QC sampler will be collected at a rate of 1 QA/QC sample for every 20 post-excavation samples. It is anticipated that 1 QA/QC sample will be collected at this Site.
  - Full chain of custody for analytical samples will be maintained and forms will be reported in the RAR.
  - Collection of QA/QC samples including blanks and duplicates will be incorporated.
3. Collection and analysis of end-point samples will be conducted to evaluate the performance of the remedy with respect to attainment of Track 4 SCOs. To evaluate attainment of Track 4 SCOs throughout the site, 7 base samples will be collected. Endpoint samples will be analyzed for VOCs, SVOCs, PCBs, Pesticides, and Metals. A map indicating End Point Sampling Locations is attached as **Addendum 2**.
  4. The vapor barrier planned for this project is Grace Products (300R & 160 R) to be installed beneath the building slab. The manufacturer specifications are attached as **Addendum 3**.
  5. Re-sampling of the three Soil Vapor points will be performed before the start of the remedial/construction work.
  6. In the event that hazardous waste is identified during the remedial action at this NYC VCP project, and removal and transportation of hazardous waste becomes necessary, the project may be subject to the New York State Department of Environmental Conservation's Special Assessment Tax (ECL 27-0923) and Hazardous Waste Regulatory Fees (ECL 72-00402). See DEC's website for more information: <http://www.dec.ny.gov/chemical/9099.html>.
  7. A pre-approval letter from all disposal facilities will be provided to OER prior to any soil/fill material removal from the site. Documentation specified in the RAWP - Appendix 3 - Section 1.6 "Materials Disposal Off-Site" will be provided to OER. If a different disposal facility for the soil/fill material is selected, OER will be notified immediately.
  8. A CD containing the final RAWP including this approved Stipulation List will be placed in the library that constitutes the primary public repository for project documents.
  9. Signage for the project will include a sturdy placard mounted in a publically accessible right of way to building and other permits signage will consist of the NYC VCP Information Sheet (attached **Addendum 4**) announcing the remedial action. The Information sheet will be laminated and permanently affixed to the placard.

Sincerely,



Ezgi Karayel  
Project Engineer

cc: W. Wong

## **Addendum 1**

### **Generic Procedures for Management of Underground Storage Tanks identified under the NYC BCP**

Prior to Tank removal, the following procedures should be followed:

- Remove all fluid to its lowest draw-off point.
- Drain and flush piping into the tank.
- Vacuum out the “tank bottom” consisting of water product and sludge.
- Dig down to the top of the tank and expose the upper half.
- Remove the fill tube and disconnect the fill, gauge, product, vent lines and pumps. Cap and plug open ends of lines.
- Temporarily plug all tank openings, complete the excavation, remove the tank and place it in a secure location.
- Render the tank safe and check the tank atmosphere to ensure that petroleum vapors have been satisfactorily purged from the tank.
- Clean tank or remove to storage yard for cleaning.
- If the tank is to be moved, it must be transported by licensed waste transporter. Plug and cap all holes prior to transport leaving a 1/8 inch vent hole located at the top of the tank during transport.
- After cleaning, the tank must be made acceptable for disposal at a scrap yard, cleaning the tanks interior with a high pressure rinse and cutting the tank in several pieces.

During the tank and pipe line removal, the following field observations should be made and recorded:

- A description and photographic documentation of the tank and pipe line condition (pitting, holes, staining, leak points, evidence of repairs, etc.).
- Examination of the excavation floor and sidewalls for physical evidence of contamination (odor, staining, sheen, etc.).
- Periodic field screening (through bucket return) of the floor and sidewalls of the excavation, with a calibrated photoionization detector (PID).

#### **Impacted Soil Excavation Methods**

The excavation of the impacted soil will be performed following the removal of the existing tanks. Soil excavation will be performed in accordance with the procedures described under Section 5.5 of Draft DER-10 as follows:

- A description and photographic documentation of the excavation.
- Examination of the excavation floor and sidewalls for physical evidence of contamination (odor, staining, sheen, etc.).
- Periodic field screening (through bucket return) of the floor and sidewalls of the excavation, with calibrated photoionization detector (PID).

Final excavation depth, length, and width will be determined in the field, and will depend on the horizontal and vertical extent of contaminated soils as identified through physical examination (PID response, odor, staining, etc.). Collection of verification samples will be performed to evaluate the success of the removal action as specified in this document.

The following procedure will be used for the excavation of impacted soil (as necessary and appropriate):

- Wear appropriate health and safety equipment as outlined in the Health and Safety Plan.
- Prior to excavation, ensure that the area is clear of utility lines or other obstructions. Lay plastic sheeting on the ground next to the area to be excavated.
- Using a rubber-tired backhoe or track mounted excavator, remove overburden soils and stockpile, or dispose of, separate from the impacted soil.
- If additional UST's are discovered, the NYSDEC will be notified and the best course of action to remove the structure should be determined in the field. This may involve the continued trenching around the perimeter to minimize its disturbance.
- If physically contaminated soil is present (e.g., staining, odors, sheen, PID response, etc.) an attempt will be made to remove it, to the extent not limited by the site boundaries or the bedrock surface. If possible, physically impacted soil will be removed using the backhoe or excavator, segregated from clean soils and overburden, and staged on separated dedicated plastic sheeting or live loaded into trucks from the disposal facility. Removal of the impacted soils will continue until visibly clean material is encountered and monitoring instruments indicate that no contaminants are present.
- Excavated soils which are temporarily stockpiled on-site will be covered with tarp material while disposal options are determined. Tarp will be checked on a daily basis and replaced, repaired or adjusted as needed to provide full coverage. The sheeting will be shaped and secured in such a manner as to drain runoff and direct it toward the interior of the property.

Once the site representative and regulatory personnel are satisfied with the removal effort, verification of confirmatory samples will be collected from the excavation in accordance with DER-10.

**Addendum 2**  
End Point Sampling Plan



NORTH 8th STREET

SIDEWALK

4-STORY  
RESIDENTIAL

246  
NORTH  
8th ST

248 C  
NORTH  
8th ST

248 B  
NORTH  
8th ST

248 A  
NORTH  
8th ST

4-STORY  
RESIDENTIAL

4-STORY  
RESIDENTIAL

251  
NORTH 7th ST

255  
NORTH 7th ST

4-STORY  
RESIDENTIAL

● Endpoint Sampling Locations

SIDEWALK

NORTH 7th STREET

0' 20' 40'  
SCALE IN FEET (FT)

# HYDRO TECH ENVIRONMENTAL CORP.



MAIN OFFICE  
77 ARKAY DRIVE, SUITE G  
HAUPPAUGE, NEW YORK 11788  
T (631)462-5866 F (631)462-5877  
www.hydrotechenvironmental.com

MFC OFFICE  
15 OCEAN AVENUE, SECOND FLOOR  
BROOKLYN, NEW YORK 11225  
T (718)636-0800 F (718)636-0900

249 North 7th Street  
248 North 8th Street  
Brooklyn, NY  
HTE Job# 070090

Drawn By:	C.O.	TITLE:
Reviewed By:	M.R.	
Approved By:	M.S.	
Date:	05/22/12	
Scale:	AS NOTED	

FIGURE 1: ENDPOINT SAMPLING PLAN

**Addendum 3**  
Vapor Barrier System

## PREPRUFE® 300R & 160R

Pre-applied waterproofing membranes that bond integrally to poured concrete for use below slabs or behind basement walls on confined sites

### Description

Preprufe® 300R & 160R membranes are unique composite sheets comprising a thick HDPE film, an aggressive pressure sensitive adhesive and a weather resistant protective coating.

Unlike conventional non-adhering membranes, which are vulnerable to water ingress tracking between the unbonded membrane and structure, the unique Preprufe bond to concrete prevents ingress or migration of water around the structure.

The Preprufe R System includes:

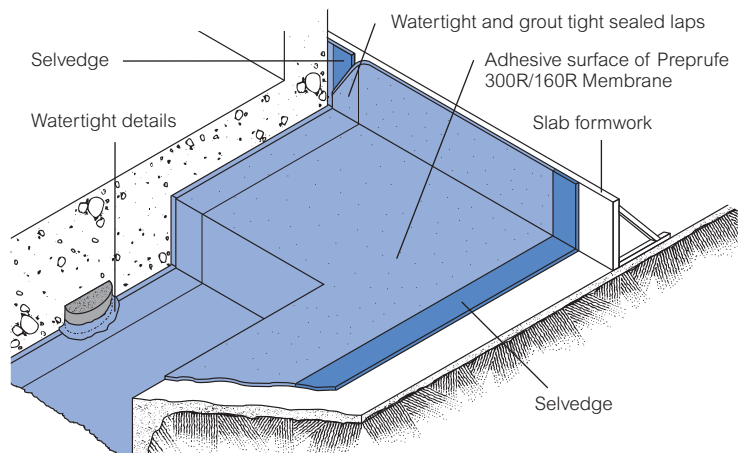
- **Preprufe 300R**—heavy-duty grade for use below slabs and on rafts (i.e. mud slabs). Designed to accept the placing of heavy reinforcement using conventional concrete spacers.
- **Preprufe 160R**—thinner grade for blindside, zero property line applications against soil retention systems.
- **Preprufe Tape LT**—for covering cut edges, roll ends, penetrations and detailing (temperatures between 25°F (-4°C) and 86°F (+30°C)).
- **Preprufe Tape HC**—as above for use in Hot Climates (minimum 50°F (10°C)).
- **Bituthene® Liquid Membrane**—for sealing around penetrations, etc.
- **Adcor™ ES**—waterstop for joints in concrete walls and floors
- **Preprufe Tieback Covers**—preformed cover for soil retention wall tieback heads
- **Preprufe Preformed Corners**—preformed inside and outside corners

Preprufe 300R & 160R membranes are applied either horizontally to smooth prepared concrete, carton forms or well rolled and compacted earth or crushed stone substrate; or vertically to permanent formwork or adjoining structures. Concrete is then cast directly against the adhesive side of the membranes. The specially developed Preprufe adhesive layers work together to form a continuous and integral seal to the structure.

Preprufe can be returned up the inside face of slab formwork but is not recommended for conventional twin-sided formwork on walls, etc. Use Bituthene self-adhesive membrane or Procor® fluid applied membrane to walls after removal of formwork for a fully bonded system to all structural surfaces.

### Advantages

- **Forms a unique continuous adhesive bond to concrete poured against it**—prevents water migration and makes it unaffected by ground settlement beneath slabs
- **Fully-adhered watertight laps** and detailing
- **Provides a barrier to water, moisture and gas**—physically isolates the structure from the surrounding ground
- **BBA Certified** for basement Grades 2, 3, & 4 to BS 8102:1990
- **Zero permeance** to moisture
- **Solar reflective**—reduced temperature gain
- **Simple and quick to install**—requiring no priming or fillets
- **Can be applied to permanent formwork**—allows maximum use of confined sites
- **Self protecting**—can be trafficked immediately after application and ready for immediate placing of reinforcement
- **Unaffected by wet conditions**—cannot activate prematurely
- **Inherently waterproof, non-reactive system:**
  - not reliant on confining pressures or hydration
  - unaffected by freeze/thaw, wet/dry cycling
- **Chemical resistant**—effective in most types of soils and waters, protects structure from salt or sulphate attack



Drawings are for illustration purposes only.  
Please refer to [graceconstruction.com](http://graceconstruction.com) for specific application details.



## Installation

The most current application instructions, detail drawings and technical letters can be viewed at [graceconstruction.com](http://graceconstruction.com). For other technical information contact your local Grace representative.

Preprufe 300R & 160R membranes are supplied in rolls 4 ft (1.2 m) wide, with a seldedge on one side to provide self-adhered laps for continuity between rolls. The rolls of Preprufe Membrane and Preprufe Tape are interwound with a disposable plastic release liner which must be removed before placing reinforcement and concrete.

### Substrate Preparation

**All surfaces**—It is essential to create a sound and solid substrate to eliminate movement during the concrete pour. Substrates must be regular and smooth with no gaps or voids greater than 0.5 in. (12 mm). Grout around all penetrations such as utility conduits, etc. for stability (see Figure 1).

**Horizontal**—The substrate must be free of loose aggregate and sharp protrusions. Avoid curved or rounded substrates. When installing over earth or crushed stone, ensure substrate is well compacted to avoid displacement of substrate due to traffic or concrete pour. The surface does not need to be dry, but standing water must be removed.

**Vertical**—Use concrete, plywood, insulation or other approved facing to sheet piling to provide support to the membrane. Board systems such as timber lagging must be close butted to provide support and not more than 0.5 in. (12 mm) out of alignment.

### Membrane Installation

Preprufe can be applied at temperatures of 25°F (-4°C) or above. When installing Preprufe in cold or marginal weather conditions 55°F (<13°C) the use of Preprufe Tape LT is recommended at all laps and detailing. Preprufe Tape LT should be applied to clean, dry surfaces and the release liner must be removed immediately after application. Alternatively, Preprufe Low Temperature (LT) is available for low temperature condition applications. Refer to Preprufe LT data sheet for more information.

**Horizontal substrates**—Place the membrane HDPE film side to the substrate with the clear plastic release liner facing towards the concrete pour. End laps should be staggered to avoid a build up of layers. Leave plastic release liner in position until overlap procedure is completed (see Figure 2).

Accurately position succeeding sheets to overlap the previous sheet 3 in. (75 mm) along the marked seldedge. Ensure the underside of the succeeding sheet is clean, dry and free from contamination before attempting to overlap. Peel back the plastic release liner from between the overlaps as the two layers are bonded together. Ensure a continuous bond is achieved without creases and roll firmly with a heavy roller. Completely remove the plastic liner to expose the protective coating. Any initial tack will quickly disappear.

Refer to Grace Tech Letter 15 for information on suitable rebar chairs for Preprufe.

**Vertical substrates**—Mechanically fasten the membrane vertically using fasteners appropriate to the substrate with the clear plastic release liner facing towards the concrete pour. The membrane may be installed in any convenient length. Fastening can be made through the seldedge using a small and low profile head fastener so that the membrane lays flat and allows firmly rolled overlaps. Immediately remove the plastic release liner.

Ensure the underside of the succeeding sheet is clean, dry and free from contamination before attempting to

overlap. Roll firmly to ensure a watertight seal.

**Roll ends and cut edges**—Overlap all roll ends and cut edges by a minimum 3 in. (75 mm) and ensure the area is clean and free from contamination, wiping with a damp cloth if necessary. Allow to dry and apply Preprufe Tape LT (or HC in hot climates) centered over the lap edges and roll firmly (see Figure 3). Immediately remove printed plastic release liner from the tape.

### Details

Refer to Preprufe Field Application Manual, Section V Application Instructions or visit [graceconstruction.com](http://graceconstruction.com). This manual gives comprehensive guidance and standard details.

### Membrane Repair

Inspect the membrane before installation of reinforcement steel, formwork and final placement of concrete. The membrane can be easily cleaned by power washing if required. Repair damage by wiping the area with a damp cloth to ensure the area is clean and free from dust, and allow to dry. Repair small punctures (0.5 in. (12 mm) or less) and slices by applying Preprufe Tape centered over the damaged area and roll firmly. Remove the release liner from the tape. Repair holes and large punctures by applying a patch of Preprufe membrane, which extends 6 in. (150 mm) beyond the damaged area. Seal all edges of the patch with Preprufe Tape, remove the release liner from the tape and roll firmly. Any areas of damaged adhesive should be covered with Preprufe Tape. Remove printed plastic release liner from tape. Where exposed seldedge has lost adhesion or laps have not been sealed, ensure the area is clean and dry and cover with fresh Preprufe Tape, rolling firmly. Alternatively, use a hot air gun or similar to activate adhesive and firmly roll lap to achieve continuity.

### Pouring of Concrete

Ensure the plastic release liner is removed from all areas of Preprufe membrane and tape.

It is recommended that concrete be poured within 56 days (42 days in hot climates) of application of the membrane. Following proper ACI guidelines, concrete must be placed carefully and consolidated properly to avoid damage to the membrane. Never use a sharp object to consolidate the concrete.

### Removal of Formwork

Preprufe membranes can be applied to removable formwork, such as slab perimeters, elevator and lift pits, etc. Once the concrete is poured the formwork must remain in place until the concrete has gained sufficient compressive strength to develop the surface bond. Preprufe membranes are not recommended for conventional twin-sided wall forming systems.

A minimum concrete compressive strength of 1500 psi (10 N/mm<sup>2</sup>) is recommended prior to stripping formwork supporting Preprufe membranes. Premature stripping may result in displacement of the membrane and/or spalling of the concrete.

Refer to Grace Tech Letter 17 for information on removal of formwork for Preprufe.

Figure 1



Figure 2

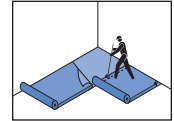
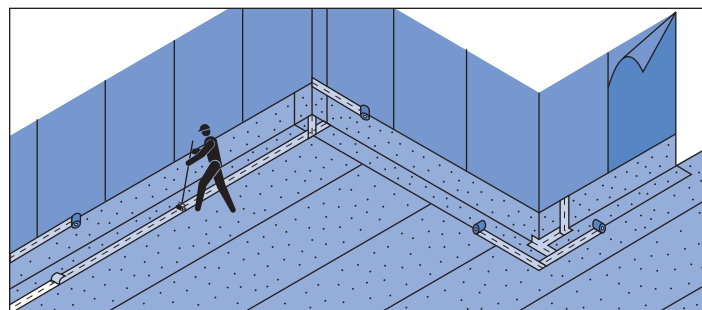
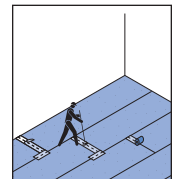


Figure 3



# GRACE

## Construction Products

### 1. Product Name

Preprufe® 300R and 160R Waterproofing Systems

### 2. Manufacturer

Grace Construction Products  
62 Whittemore Avenue  
Cambridge, MA 02140  
(866) 333-3SBM (3726)  
Fax: (617) 498-4311  
www.graceconstruction.com

### 3. Product Description

#### BASIC USE

Preprufe® 300R and Preprufe 160R membranes are used in blind side waterproofing applications where positive side waterproofing is desired but the positive side of the structure is not accessible once the concrete is poured.

Preprufe 300R Membrane is used primarily in under slab and below-grade split slab applications. Preprufe 300R Membrane is applied over properly prepared earth, stone or concrete. Concrete is cast against the adhesive side of the membrane. Preprufe 300R Membrane incorporates an exceptionally tough HDPE film and is designed to allow foot traffic directly on the membrane during construction.

Preprufe 160R Membrane is used in vertical applications. It is applied to properly prepared soil retention systems and concrete is cast against the membrane.

#### COMPOSITION & MATERIALS

Preprufe 300R and Preprufe 160R membranes are multilayered composite sheets consisting of an exceptionally tough HDPE film, a specially formulated synthetic pressure sensitive adhesive and a protective coating.

#### ACCESSORY COMPONENTS

- Preprufe Tape
- Preprufe Tieback Cover
- Bituthene® Liquid Membrane
- Preprufe CJ Tape

### 4. Technical Data

#### APPLICABLE STANDARDS

ASTM International

- ASTM C836 Standard Specification for High Solids Content, Cold Liquid-Applied Elastomeric Waterproofing Membrane for Use with Separate Wearing Course
- ASTM D412 Standard Test Methods for Vulcanized Rubber and Thermoplastic Rubbers and Thermoplastic Elastomers-Tension
- ASTM D570 Standard Test Method for Water Absorption of Plastics
- ASTM D882 Standard Test Method for Tensile Properties of Thin Plastic Sheet
- ASTM D903 Standard Test Method for Peel or Stripping Strength of Adhesive Bonds
- ASTM D1876 Standard Test Method for Peel Resistance of Adhesives (T-Peel Test)
- ASTM D1970 Standard Specification for Self-Adhering Polymer Modified Bituminous Sheet Materials Used as Steep Roofing Underlayment for Ice Dam Protection
- ASTM D3767 Standard Practice for Rubber-Measurement of Dimensions
- ASTM D5385 Standard Test Method for Hydrostatic Pressure Resistance of Waterproofing Membranes
- ASTM E96 Standard Test Methods for Water Vapor Transmission of Materials
- ASTM E154 Standard Test Methods for Water Vapor Retarders Used in Contact with Earth Under Concrete Slabs, on Walls, or as Ground Cover

#### PHYSICAL PROPERTIES

For detailed information on the physical properties of Preprufe 300R and Preprufe 160R Membranes, see Table 1.

### 5. Installation

Apply membranes when ambient temperatures are 25 degrees F (-4 degrees C) or above. Substrates must be smooth and sound with no gaps or voids in excess of 1/2" (13 mm).

#### FORMING SYSTEMS

It is very important to specify a forming system that is compatible with the Preprufe system. One-sided wall forming systems are clearly the best choice since there are no form ties used in this system. Therefore, there are no penetrations to the waterproofing layer. Other compatible systems include gang forms with load gathering form ties. These systems minimize the number of penetrations.

Hand set forming systems or, more specifically, use of form ties with ultimate load capabilities of less than 10,000 lb (44,500 N) per tie are not recommended. These systems have many form ties that penetrate the waterproofing.

#### Formwork

On vertical applications, use one-sided wall forming systems to minimize punctures in the membrane after the membrane is installed. Review Technical Letter "Forming Systems for use with Preprufe 160R Membrane."

#### APPLICATION

##### Vertical Applications

Apply the membrane with the thick white HDPE film side facing the prepared substrate and the protective coating side facing the concrete to be poured. The membrane may be installed in any convenient length vertically. For lengths of membrane greater than 8' (2.4 m), mechanically fasten the membrane at 2' (0.6 m) intervals centered in the self-adhesive selvedge prior to making the side lap, using small head nails or staples.

Using the lap line as a guide, apply subsequent sheets overlapping the in-place sheet 3" (75 mm) along the self-adhesive selvedge of the membrane. Avoid overlapping membrane beyond the guideline to prevent fishmouths. Should they occur, apply Preprufe Tape centered over the fishmouth, roll firmly to form a tight seal and remove release liner.

It is important that all nail heads be covered with the overlapping sheets of membrane. Side laps must be immediately rolled firmly to ensure a tight seal. A metal seam roller is recommended. To maximize adhesion in colder temperatures or in damp conditions, apply gentle heat to the lap area using a hot air gun (see Technical Letters). Overlap the ends of the membrane a minimum of 3" (75 mm). Remove and discard the release liner from both sheets. Apply Preprufe Tape centered over the end lap and edges of membrane not sealed by selvedge. Roll firmly to form a tight seal. Remove release liner from tape and discard.

For additional protection, Hydroduct® Tape may be applied between the sheets in the end lap area prior to application of the Preprufe Tape. Secure the top termination of the membrane with a termination bar and fasteners.

If the top termination is to be covered by the concrete pour, a strip of Preprufe CJ Tape must be placed over the termination bar and fasteners. Place the termination bar 2" (50 mm)

below the top edge of the membrane. If the membrane will tie into subsequent sheets of Preprufe, Bituthene Membrane or other waterproofing, leave an additional 12" (300 mm) length of Preprufe 160R membrane. Protect this length from damage and do not remove the release liner. This length of clean membrane will be used to complete the appropriate waterproofing details after the concrete or lift is poured.

### Horizontal Applications

Roll out the membrane with the thick white HDPE film side facing the prepared substrate and the protective coating side facing the concrete to be poured. Remove the clear release liner at the time of installation. Using the lap line as a guide, align and roll out subsequent sheets overlapping the in-place sheet 3" (75 mm) along the self-adhesive selvage of the membrane. Side laps must be immediately rolled firmly to ensure a tight seal. A heavy metal seam roller is recommended.

Avoid overlapping membrane beyond the guideline to prevent fishmouths. Should this occur, apply Preprufe Tape centered over the fishmouth, roll firmly to form a tight seal and remove release liner. To maximize adhesion in

cooler temperatures or in damp conditions, apply gentle heat to the lap area using a hot air gun (see Technical Letters section of website). The membrane may be installed in any convenient length. Overlap the ends of the membrane 3" (75 mm) and remove and discard the release liner from both sheets. Apply Preprufe Tape centered over the end lap and edges of membrane not sealed by selvage. Roll firmly to form a tight seal. Remove release liner from tape and discard.

For additional protection, Hydroduct Tape may be applied between the sheets in the end lap area prior to application of the Preprufe Tape.

### Internal & External Corners

Install the Preprufe Membrane according to standard application instructions detailed for vertical and horizontal applications above. Internal and external corners should be formed as shown in the Detail Drawings returning the membrane a minimum of 4" (100 mm).

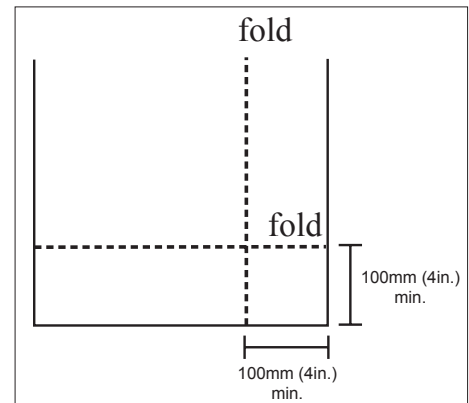


Figure 1

### Internal Corners

Fold the membrane as indicated in Figure 1. Crease the fold with nominal hand pressure to ensure a close fit to the substrate profile and avoid hollows. With the white coating facing toward the concrete, ensure that the apex of the corner is covered and sealed with Preprufe Tape. Remove release liner and roll firmly.

### External Corners

Fold the membrane as indicated in Figure 1. Crease the fold with nominal hand pressure to

TABLE 1 PHYSICAL PROPERTIES OF PREPRUFE 160R AND PREPRUFE 300R MEMBRANES

Property & test method	Typical values	
	Preprufe 160R Membrane	Preprufe 300R Membrane
Color	White	White
Thickness, ASTM D3767, Method A	0.032" (0.8 mm) nominal	0.046" (1.2 mm) nominal
Low temperature flexibility, ASTM D1970	Unaffected at -10°F (-23°C)	Unaffected at -10°F (-23°C)
Resistance to hydrostatic head, minimum, ASTM D5385, Modified <sup>1</sup>	23† (70 m)	23† (70 m)
Elongation, minimum, ASTM D412, Modified <sup>2</sup>	300%	300%
Tensile strength, film, minimum, ASTM D882	4000 psi (27.6 MPa)	4000 psi (27.6 MPa)
Crack cycling, at -10°F (-23°C), 100 cycles, ASTM C836	Unaffected	Unaffected
Puncture resistance, minimum, ASTM E154	100 lb (445 N)	221 lb (990 N)
Peel adhesion to concrete, minimum, ASTM D903, Modified <sup>3</sup>	5.0 lb/in width (880 N/m)	5.0 lb/in width (880 N/m)
Lap peel adhesion, ASTM D1876, Modified <sup>4</sup>	2.5 lb/in width (440 N/m)	2.5 lb/in width (440 N/m)
Permeance to water vapor transmission, maximum, ASTM D96, Method B	0.01 perms (0.6 ng/(Pa × s × m²))	0.01 perms (0.6 ng/(Pa × s × m²))
Water absorption, maximum, ASTM D570	0.5%	0.5%

<sup>1</sup> Hydrostatic head tests of Preprufe Membranes are performed by casting concrete against the membrane with a lap. Before the concrete cures, a 0.125" (3 mm) spacer is inserted perpendicular to the membrane to create a gap. The cured block is placed in a chamber where water is introduced to the membrane surface up to the head indicated.

<sup>2</sup> Elongation of membrane is run at a rate of 2" (51 mm) per minute.

<sup>3</sup> Concrete is cast against the protective coating surface of the membrane and allowed to properly dry (7 days minimum). Peel adhesion of membrane to concrete is measured at a rate of 2" (51 mm) per minute at room temperature.

<sup>4</sup> The test is conducted 15 minutes after the lap is formed (per Grace published recommendations) and run at a rate of 2" (51 mm) per minute at 25°F (-4°C).



ensure a close fit to the substrate profile and avoid hollows. Cut the Preprufe membrane in order to wrap around corner. With the white coating facing toward the concrete, ensure that the apex of the corner is covered and sealed with Preprufe Tape. Remove release liner and roll firmly.

### Round Penetrations

For Service Pipes, Lighting Conduit, Piles, etc. - Follow these steps to seal around penetrations:

1. All penetrations must be firmly secured and stable. Grout around all penetrations that are not stable. Clean loose dust or dirt from the penetration surface using a clean, dry cloth or brush. Remove rust, if applicable, with a wire brush and wipe clean.
2. Cut the field membrane tight to the penetration and remove release liner. If membrane is not within 1/2" (12 mm) of penetration and not more than 2" (50 mm) from penetration, apply Preprufe Tape to cover the gap. Roll firmly into place and remove release liner. If the membrane is greater than 2" (51 mm) from penetration, install more Preprufe Membrane to cover the gap, repeating these instructions until Preprufe

Membrane/Tape is within 1/2" (12 mm).

3. Mix and apply Bituthene Liquid Membrane around the penetration. Liquid Membrane should be placed to form a minimum 1" (25.4 mm) continuous fillet between the Preprufe Membrane/Tape and the base of the penetration.
4. Cut a patch of Preprufe Membrane that is a minimum of 12" (300 mm) larger than the diameter or width of the penetration so that the patch extends 6" (150 mm) beyond the penetration in all directions. Remove the release liner and center the patch over penetration and trace/draw the penetration profile onto the patch. Using sheers or a utility knife, make relief cuts through the membrane. Triangles formed by making a

relief cut are not to exceed 2" (50 mm) in height when placed over penetration. In other words, penetration diameters greater than 4" (100 mm) need to be trimmed. Remove and discard release liner.

5. Slide the patch over penetration and press into the partially cured Liquid Membrane. Ensure that the patch is pressed firmly into the Liquid Membrane and is positioned directly onto the Preprufe Field Membrane/Tape below. Using a trowel, smooth out any Liquid Membrane that has flowed out of the relief cut.
6. Apply Preprufe Tape centered over the edges of the patch and roll firmly to form a tight seal. Remove release liner from tape and discard.
7. Wrap the penetration with Preprufe Tape, positioning the tape at the base of the patch. Remove enough release liner to overlap Tape onto itself and roll/press firmly into place. Remove remaining release liner and discard.

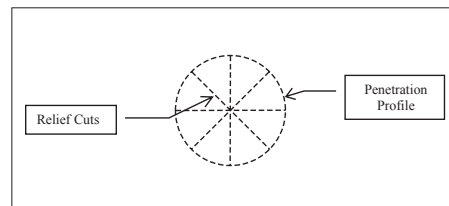


Figure 2

### Straight Edge Penetrations

For square piles, steel columns, walers, rakers, etc. - Follow these steps to seal around

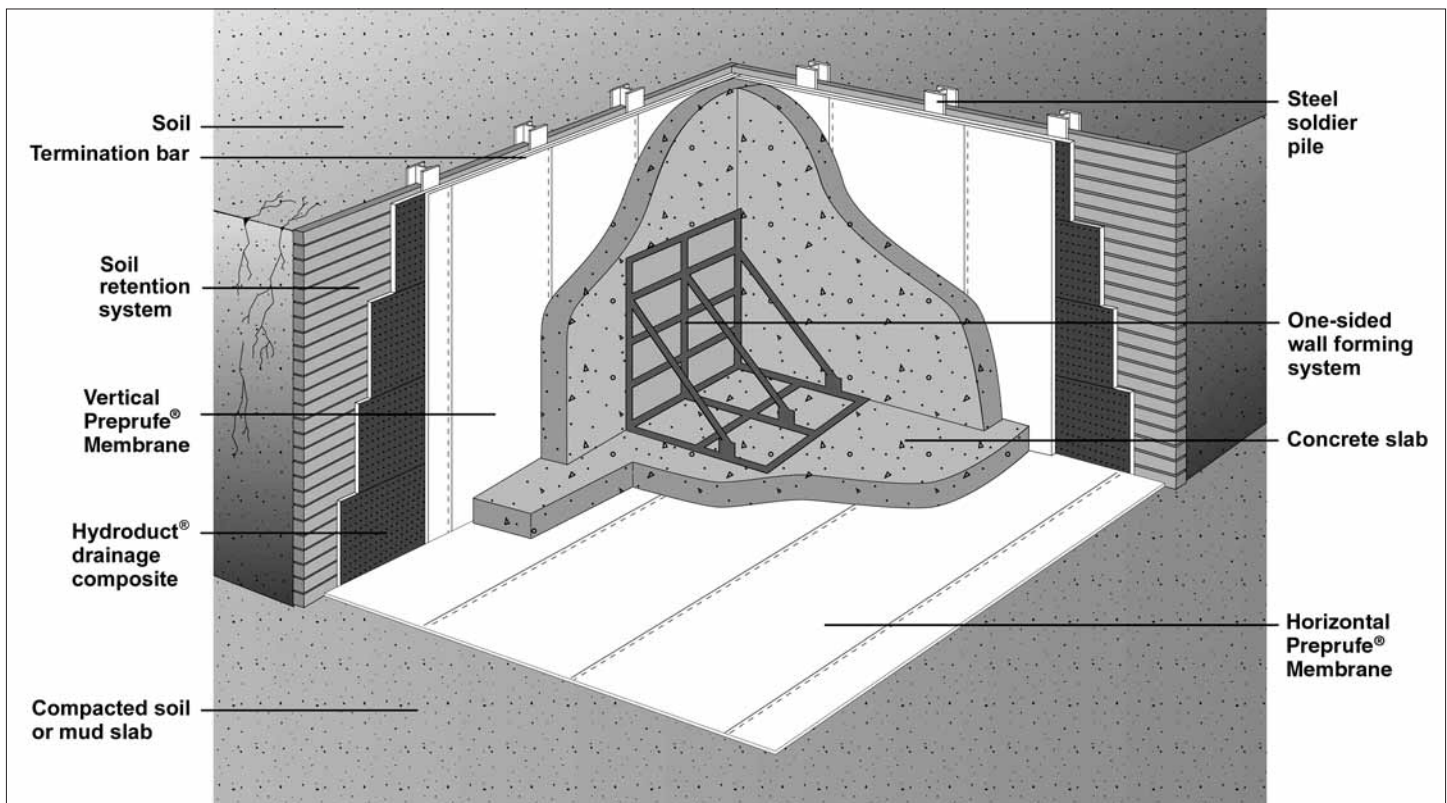


Figure 3 Preprufe® Waterproofing Systems

penetrations:

1. All penetrations must be firmly secured and stable. Grout around all penetrations that are not stable. Clean loose dust or dirt from the penetration surface using a clean, dry cloth or brush. Remove rust, if applicable, with a wire brush and wipe clean.
2. Cut the field membrane tight to the penetration and remove release liner. If membrane is not within 1/2" (12 mm) of penetration and not more than 2" (51 mm) from penetration, apply Preprufe Tape to cover the gap. Roll firmly into place and remove release liner. If the membrane is greater than 2" (51 mm) from penetration, install more Preprufe Membrane to cover the gap repeating these instructions until Preprufe Membrane/Tape is within 1/2" (12 mm).
3. Mix and apply Bituthene Liquid Membrane around the penetration. Liquid Membrane should be placed to form a minimum 1" (25.4 mm) continuous fillet between the Preprufe Membrane/Tape and the base of the penetration. Apply a 90 mil (2.2 mm) continuous coating overlapping a minimum of 3" (75 mm) onto the surface of the Preprufe Membrane and the penetration.
4. Install a minimum 12" (300 mm) strip of Bituthene Membrane centered over the Preprufe Membrane and the penetration intersection.
5. Install Preprufe Tape to cover the strip of Bituthene Membrane by overlapping a minimum of 1" (25.4 mm) until a minimum of 2" (51 mm) overlap onto the Preprufe Membrane is achieved.
6. Terminate the top edge of the strip of Bituthene Membrane and Preprufe Tape along the penetration with a bead of Bituthene Liquid Membrane.

## Wall Penetrations

For Rebar, All-Thread, Metal Dowels, etc. - Follow these steps to seal around penetrations:

1. Clean loose dust or dirt from the penetration and the surrounding substrate surface using a clean, dry cloth or brush. Remove rust, if applicable, with a wire brush and wipe clean.
2. Mix and apply Bituthene Liquid Membrane around the penetration. Liquid Membrane should be placed to form a minimum 1" (25.4 mm) continuous fillet between the substrate and the base of the penetration.
3. Cut the field membrane tight to the penetration and remove release liner. If membrane is not within 1/2" (12 mm) of penetration and not more than 2" (51 mm) from

penetration, apply Preprufe Tape to cover the gap. Roll firmly into place and remove release. If the membrane is greater than 2" (51 mm) from penetration, install more Preprufe Membrane to cover the gap repeating these instructions until Preprufe Membrane/Tape is within 1/2" (12 mm).

4. Position the field membrane snug to the penetration so that it is a maximum of 1/2" (12 mm) from the base of the penetration and press firmly into the partially cured Liquid Membrane.
5. Apply Liquid Membrane to form a minimum 1" (25.4 mm) continuous fillet between the Preprufe Membrane and the base of the penetration. Extend a 90 mil (2.2 mm) continuous coating of Liquid Membrane overlapping a minimum of 3" (75 mm) onto the surface of the Preprufe Membrane and 6" (150 mm) onto the penetration.
6. Wrap the penetration with Preprufe Tape, positioning the tape at the base of the penetration. Remove enough release liner to overlap tape onto itself and roll/press firmly into place. Remove remaining release liner and discard.

## Tiebacks

The Preprufe Tieback Cover is a specially designed, two-part cover used to maintain waterproofing integrity at soil retention tieback heads. The Preprufe Tieback Cover consists of a rigid ABS plastic base and prefabricated Preprufe membrane cover.

1. Install Preprufe Membrane within 2" of tieback as per standard installation instructions.
2. Center the base over tieback head and secure base to soil retention system using appropriate fasteners. Fasteners should have a low profile head.
3. Apply Preprufe Tape centered over the edge of the base flange and roll firmly to form a tight seal. Remove release liner and discard.
4. Position the membrane cover over the base taking care to ensure the cover flange sits flat onto the Preprufe Membrane.
5. Apply Preprufe Tape centered over the edge of the cover flange and roll firmly to form a tight seal. Remove release liner and discard.

Note: All Preprufe Tape should overlap onto surfaces of tape, membrane, base, cover, etc., a minimum of 50 mm (2").

## Columns

There are 2 common methods to create a waterproof seal under columns.

- Column Option 1 - Preprufe Membrane is placed over the column footing and directly under the column. Tie-in penetrations such as rebar and threaded rod that penetrate the membrane should be sealed with Bituthene Liquid Membrane. Cut the membrane tight to the penetration. If membrane is not within 1/2" (12 mm) of penetration, apply Preprufe Tape to cover the gap. Mix and apply Bituthene Liquid Membrane around the penetration. Bituthene Liquid Membrane should be placed to form a minimum 1" (25.4 mm) continuous fillet around the penetration at the point of penetration. Bituthene Liquid Membrane should be applied as a 90 mil (2.2 mm) continuous coating overlapping a minimum of 3" (75 mm) onto the surface of the Preprufe membrane.
- Column Option 2 - Preprufe Membrane is placed below the column footing before it is poured. The membrane is installed following the vertical and horizontal application instructions described earlier in this section. When placing the membrane, it is important to leave sufficient length of Preprufe 300R beyond the footing to allow for tie-in to the Preprufe Membrane that will be laid to waterproof the general slab area. The release liner must not be removed from this extra length, and it should be protected from damage until the tie-in details are completed.

## Grade Beam Pile Caps

The preferred methods to waterproof pile caps are to either "tank" or "cover" the pile cap.

- Pile Cap Option 1 (Tanking Option) - Install Preprufe Membrane over the prepared substrate as instructed in horizontal applications above. Preprufe Membrane is placed in the area formed for the pile cap before the concrete is poured. When placing the membrane, it is important to leave sufficient length of Preprufe beyond the pile cap area to allow for tie-in to the Preprufe Membrane that will be laid to waterproof the general slab area. Cut membrane tight to each pile and complete detail around each pile as instructed earlier in this section for a Penetration Detail.
- Pile Cap Option 2 (Covering Option) - For mud slabs, clean loose dust or dirt from the

pile cap and mud slab surface using a clean, dry cloth or brush. Apply a continuous 90 mil (2.2 mm) coating of Bituthene Liquid Membrane or Procor over the top of the pile cap. Place a 1" (25.4 mm) bead of Liquid Membrane or Procor around all penetrations at the point of penetration through the pile cap. Prime along the edge of the mud slab a minimum of 6" (150 mm) from the edge of pile cap with a Bituthene Primer and allow to dry. Align a 9" (225 mm) strip of Bituthene Membrane centered over the edge of the pile cap. Remove release liner and roll firmly onto the Liquid Membrane and primed mud slab. Install Preprufe Membrane over the prepared substrate and terminate it 2" (51 mm) onto the pile cap. Apply Preprufe Tape centered over the Preprufe Membrane termination. Remove the release liner and roll firmly. Seal Bituthene Membrane and Preprufe Tape edge with a termination bead of Liquid Membrane.

### Pile Cap Option 2 for Compacted Earth

Apply a continuous 90 mil (2.2 mm) coating of Bituthene Liquid Membrane or Procor over the top of the pile cap. Place a 1" (25.4 mm) bead of Liquid Membrane or Procor around all penetrations at the point of penetration through the pile cap. Remove compacted earth away from the sides of pile cap. Clean loose dust or dirt from the pile cap surface using a clean, dry cloth or brush.

Prime the sides of the pile cap a minimum of 6" (150 mm) from the top of pile cap with a Bituthene Primer and allow to dry. Align a 9" (225 mm) strip of Bituthene Membrane centered over the outside edge (outside corner) of the pile cap. Remove release liner and roll firmly onto the Liquid Membrane and primed sides of pile cap. Align a 12" (300 mm) strip of Bituthene Membrane centered over the outside edge (outside corner) of the pile cap. Remove half of release liner by scoring release liner along the center of the strip.

Roll firmly onto the sides of pile cap with the 9" (225 mm) strip of Bituthene Membrane and the remaining primed pile cap. Leave the other half of the 12" (300 mm) strip with the release liner still intact in order to receive the Preprufe Membrane. Replace earth/fill and compact per standard back-filling instructions being careful not to damage the Bituthene strip including the non-bonded portion. Invert the Bituthene strip, and remove the remaining release liner to expose the adhesive portion

of the Bituthene.

Install Preprufe Membrane over the prepared substrate and terminate it 2" (51 mm) onto the pile cap. Roll firmly onto the inverted Bituthene strip. Apply Preprufe Tape centered over the Preprufe Membrane termination. Remove the release liner and roll firmly. Seal Bituthene Membrane and Preprufe Tape edge with a termination bead of Liquid Membrane.

**Pile Cap Option 2 for Non-Continuous Covering**  
If the Structural Engineer or the design does not allow for the waterproofing to "cover" the pile cap, there must be a minimum 6" (150 mm) continuous shoulder along the perimeter of the pile cap to allow for a proper termination. Apply a continuous 90 mil (2.2 mm) coating of Bituthene Liquid Membrane or Procor onto the top of the pile cap along the outside edge.

Apply a 6" (150 mm) strip of Bituthene Membrane onto the Bituthene Liquid Membrane or Procor along the edge of the pile cap. Install Preprufe Membrane over the prepared substrate and terminate it 2" (51 mm) onto the pile cap. Apply Preprufe Tape centered over the Preprufe Membrane termination. Remove the release liner and roll firmly. Seal Bituthene Membrane and Preprufe Tape edge with a termination bead of Liquid Membrane.

### Construction Joints

Install the Preprufe membrane according to standard horizontal and vertical application instructions detailed above. Preprufe CJ Tape should be applied to the surface of the Preprufe membrane and centered along the line of all concrete joints. Remove release liner and roll firmly.

### Tie-Ins

**Preprufe 160R to Preprufe 300R Sub Slab Waterproofing** - Install Preprufe 300R Membrane over the prepared substrate as detailed in horizontal and vertical applications above. Continue onto the vertical surface of the prepared soil retention system a minimum of 18" (450 mm) above the finished elevation of the structural floor slab.

Secure the top of the membrane to temporarily hold it in place on the vertical substrate. Care should be taken to prevent damage to this exposed membrane from concrete back-splash as well as slag from rebar welding in wall forms. The exposed membrane on the vertical surface can be protected with

protection board, plywood or other materials.

Following the vertical application instructions detailed above, install Preprufe 160R Membrane over the prepared vertical soil retention system. Unfasten the vertical length of the Preprufe 300R Membrane and tuck the Preprufe 160R behind the 18" (450 mm) length of Preprufe 300R, ensuring a minimum 3" (75 mm) lap. Complete the detail by installing Preprufe Tape centered over the lap being careful to seal any holes from fasteners. Roll firmly and remove the release liner.

**Preprufe 300R to Post-Applied Wall Waterproofing** - There are 2 options available to tie Preprufe 300R Membrane into wall waterproofing. In Option 1, the Preprufe 300R Membrane is installed under the concrete slab and the footing. Option 2 is intended for applications where the Preprufe 300R Membrane and wall waterproofing are connected through the wall and footing junction.

- Option 1 - Install Preprufe 300R Membrane over the prepared horizontal substrate and extend it up the vertical surface of the slab formwork. Terminate the membrane 6" (150 mm) above the top elevation of the structural floor slab or wall footing. Once the slab or footing is poured and cured for 7 days, remove the forms and trim the excess membrane above the slab (see Technical Letters). Install the wall membrane according to standard application procedures of the post-applied waterproofing manufacturer. Ensure that the wall membrane overlaps onto the surface of the Preprufe 300R by a minimum of 6" (150 mm).
- Option 2 - Prior to the pouring of the wall, apply a 90 mil (2.2 mm) coating of Bituthene Liquid Membrane on top of the footing area using standard application procedures. Extend the Bituthene Liquid Membrane 3" (75 mm) beyond the proposed wall width in each direction. Install the wall membrane according to standard application procedures of the post-applied waterproofing manufacturer. Ensure that the wall membrane overlaps onto the surface of the Preprufe 300R by a minimum of 6" (150 mm). On the inside of the wall, install a minimum 9" (225 mm) strip of Bituthene sheet membrane over the Bituthene Liquid Membrane that extends beyond the footing area. Install Bituthene Membrane by removing the release liner and firmly rolling the product in place. Install Preprufe 300R Membrane over the prepared substrate and terminate it at the center of the Bituthene sheet membrane strip. Apply Preprufe CJ Tape centered over the Preprufe



300R Membrane termination. Remove the release liner and roll firmly.

**Preprufe 160R to Plaza Deck Waterproofing** - Install Preprufe 160R over the prepared vertical surface following the standard vertical application instructions above. Terminate the Preprufe 160R Membrane 6" (150 mm) above the proposed height of the finished wall. Once the wall is poured and properly cured, remove temporary forming and trim the excess Preprufe 160R remaining above the wall. Install the plaza deck waterproofing according to the manufacturer's standard installation procedures. Ensure that the plaza deck waterproofing overlaps the 160R membrane a minimum of 9" (225 mm) and terminate it onto the Preprufe 160R using a bead of Bituthene Liquid Membrane.

**Preprufe 160R to Post-Applied Wall Waterproofing** - Install Preprufe 160R over the prepared vertical surface following the standard vertical application instructions above. Extend the Preprufe 160R Membrane 12" (300 mm) beyond the end of the blind-side wall. As the foundation wall formwork is installed, fold the 12" (300 mm) piece of Preprufe 160R Membrane to form a sharp corner. Secure it to the inside face of the exterior form panel. Once the wall is poured and cured for seven days, remove the formwork and install the post-applied waterproofing according to the manufacturer's standard installation procedures.

**Preprufe 300R Membrane Wall Termination**

- **Option 1 (Liquid Membrane Detail)** - Install Preprufe 300R Membrane over a mud slab as detailed in horizontal applications above. For compacted earth, contact a local Grace representative. Install Preprufe 300R Membrane tight to all vertical and horizontal intersections. At the termination of the membrane, place a 1" (25.4 mm) fillet of Bituthene liquid membrane and trowel a 90 mil (2.2 mm) coating a minimum of 3" (75 mm) onto vertical and horizontal surfaces. Remove the release liner and install a minimum 12" (300 mm) strip of Bituthene Membrane centered over the horizontal termination. Install Preprufe Tape to cover the strip of Bituthene Membrane by overlapping a minimum of 1" (25.4 mm) until a minimum of 2" (51 mm) overlap onto the Preprufe Membrane is achieved. Terminate the top edge of the strip of Bituthene Membrane and Preprufe Tape along the wall with a

bead of Bituthene Liquid Membrane.

- **Option 2 (Sheet Membrane Detail)** - Install Preprufe 300R Membrane over the prepared substrate as detailed in horizontal applications above. Install Preprufe 300R Membrane tight to all vertical and horizontal intersections. Install a minimum 6" (150 mm) strip of Bituthene Membrane on the vertical surface along the joint. Mix and apply Bituthene Liquid Membrane to form a minimum 1" (25.4 mm) continuous fillet between the Preprufe Membrane and the wall. Install Preprufe CJ Tape 6" (150 mm) from the edge of the wall onto the Preprufe Membrane and terminate 2" (51 mm) onto the strip of Bituthene Membrane. Install Preprufe CJ Tape onto the strip of Bituthene Membrane and overlap onto the previous Preprufe CJ Tape a minimum of 2" (51 mm). Terminate the top edge of the strip of Bituthene Membrane and Preprufe Tape along the wall with a bead of Bituthene Liquid Membrane.

**Membrane Repair**

Inspect the membrane for damage before placement of reinforcing steel, formwork and concrete. Repair small punctures 1/2" (12 mm), or less, and slices by applying Preprufe Tape centered over the damaged area and roll firmly. Remove the release liner from the tape. Repair holes and large punctures by applying a patch of Preprufe membrane, which extends 6" (150 mm) beyond the damaged area. Seal all edges of the patch with Preprufe Tape, remove the release liner from the tape and roll firmly.

**CONCRETE PLACEMENT**

Lightly soiled membrane should be cleaned with air blower and heavily soiled membrane should be cleaned with a power-washer. Cast concrete within 56 days (42 days in hot climates) of application of the membrane. Concrete must be placed carefully to avoid damage to the membrane. Never use a sharp object to consolidate concrete.

**REMOVAL OF FORMWORK**

Preprufe Membranes can be applied to removable formwork, such as slab perimeters, elevator and lift pits, etc. Once the concrete is poured, the formwork must remain in place until the concrete has gained sufficient compressive strength to develop the surface bond. Preprufe Membranes are not recommended for conventional twin-sided wall forming systems.

A minimum concrete compressive strength

of 1500 psi (10 N/mm<sup>2</sup>) is recommended prior to stripping formwork supporting Preprufe Membranes. Premature stripping may result in displacement of the membrane and/or spalling of the concrete.

As a guide, to reach the minimum compressive strength stated above, a structural concrete mix with an ultimate strength of 6000 psi (40 N/mm<sup>2</sup>) will typically require a cure time of approximately 6 days at an average ambient temperature of 25 degrees F (-4 degrees C) or 2 days at 70 degrees F (21 degrees C).

## 6. Availability & Cost

**AVAILABILITY**

A network of distributors carries Preprufe and Bituthene products for prompt delivery to project sites.

**COST**

For specific information, contact a local distributor or a Grace Construction Products representative.

## 7. Warranty

A 5 year material warranty for Preprufe and Bituthene membrane products is available from the manufacturer upon request.

## 8. Maintenance

Preprufe 300R and Preprufe 160R membranes will not require maintenance when installed in accordance with Grace's recommendations.

## 9. Technical Services

Support is provided by full-time, technically trained Grace field sales representatives and technical service personnel, backed by a central research and development staff.

## 10. Filing Systems

- Reed First Source
- Additional product information is available from the manufacturer.

W. R. Grace & Co. -Conn. hopes the information here will be helpful. It is based upon data and knowledge considered to be true and accurate and is offered for the users' consideration, investigation and verification, but we do not warrant the results to be obtained. Please read all statements, recommendations and suggestions in conjunction with our conditions of sale, which apply to all goods supplied by us. No statement, recommendation or suggestion is intended for any use which would infringe any patent or copyright. W. R. Grace & Co. -Conn., 62 Whittemore Avenue, Cambridge, MA 02140. In Canada, W. R. Grace & Co. Canada, Ltd., 294 Clements Road, West, Ajax, Ontario, Canada L1S 3C6.

Preprufe, Bituthene and Hydrotect are registered trademarks of W. R. Grace & Co. -Conn. Copyright 2005 W. R. Grace & Co. -Conn.

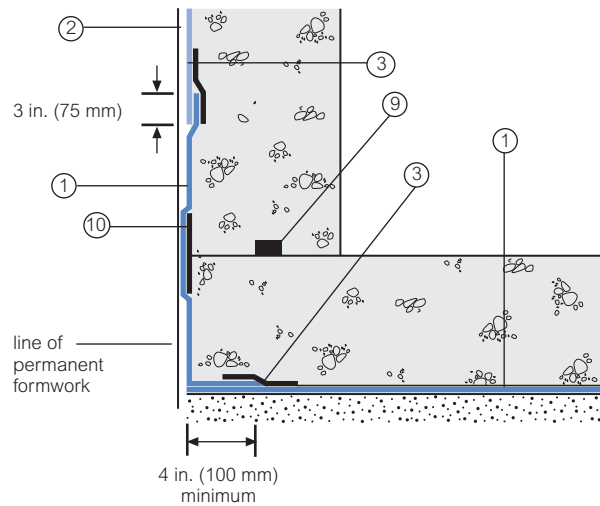
This product may be covered by patents or patents pending.

PF-118C Printed in U.S.A. 11/06 AFS/LJ/3M

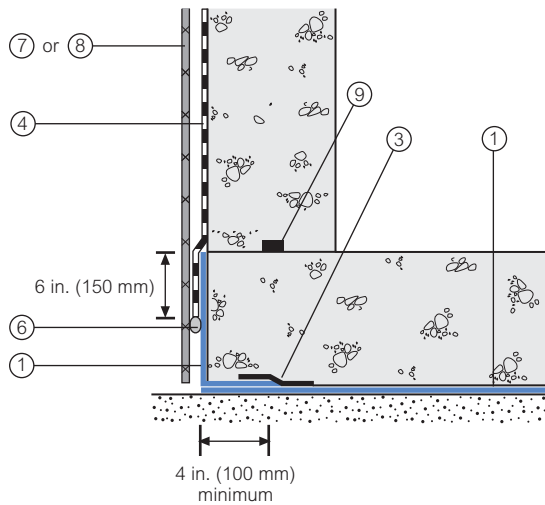
## Detail Drawings

Details shown are typical illustrations and not working details. For a list of the most current details, visit us at [graceconstruction.com](http://graceconstruction.com). For technical assistance with detailing and problem solving please call toll free at 866-333-3SBM (3726).

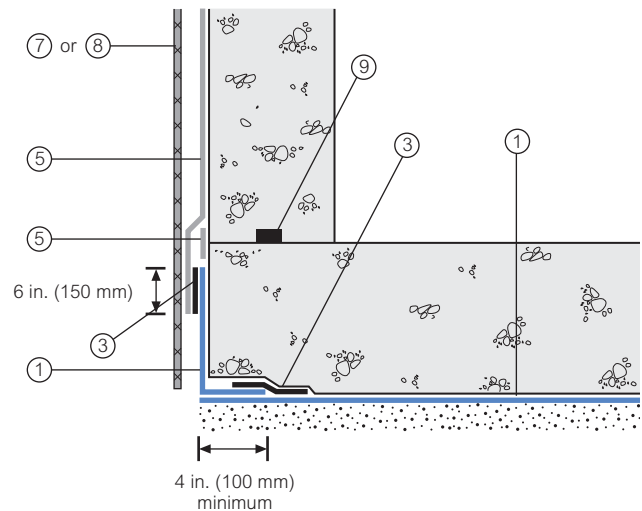
### Wall base detail against permanent shutter



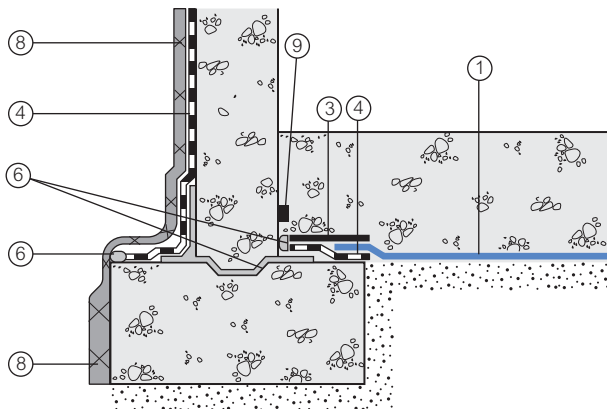
### Bituthene wall base detail (Option 1)



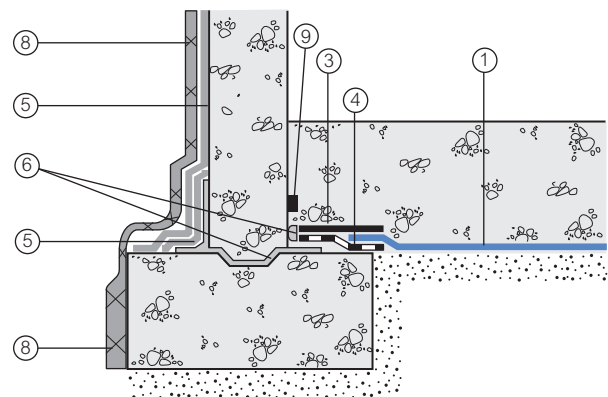
### Procor wall base detail (Option 1)



### Bituthene wall base detail (Option 2)



### Procor wall base detail (Option 2)



- 1 Preprufe 300R
- 2 Preprufe 160R
- 3 Preprufe Tape
- 4 Bituthene

- 5 Procor
- 6 Bituthene Liquid Membrane
- 7 Protection

- 8 Hydroduct®
- 9 Adcor ES
- 10 Preprufe CJ Tape



## Supply

Dimensions (Nominal)	Preprufe 300R Membrane	Preprufe 160R Membrane	Preprufe Tape (LT or HC*)
Thickness	0.046 in. (1.2 mm)	0.032 in. (0.8 mm)	
Roll size	4 ft x 98 ft (1.2 m x 30 m)	4 ft x 115 ft (1.2 m x 35 m)	4 in. x 49 ft (100 mm x 15 m)
Roll area	392 ft <sup>2</sup> (36 m <sup>2</sup> )	460 ft <sup>2</sup> (42 m <sup>2</sup> )	
Roll weight	108 lbs (50 kg)	92 lbs (42 kg)	4.3 lbs (2 kg)
Minimum side/end laps	3 in. (75 mm)	3 in. (75 mm)	3 in. (75 mm)
* LT denotes Low Temperature (between 25°F (-4°C) and 86°F (+30°C)) HC denotes Hot Climate (50°F (>+10°C))			
<b>Ancillary Products</b>			
Bituthene Liquid Membrane—1.5 US gal (5.7 liter) or 4 US gal (15.1 liter)			

## Physical Properties

Property	Typical Value 300R	Typical Value 160R	Test Method
Color	white	white	
Thickness	0.046 in. (1.2 mm)	0.032 in. (0.8 mm)	ASTM D3767
Lateral Water Migration Resistance	Pass at 231 ft (71 m) of hydrostatic head pressure	Pass at 231 ft (71 m) of hydrostatic head pressure	ASTM D5385, modified <sup>1</sup>
Low temperature flexibility	Unaffected at -20°F (-29°C)	Unaffected at -20°F (-29°C)	ASTM D1970
Resistance to hydrostatic head	231 ft (71 m)	231 ft (71 m)	ASTM D5385, modified <sup>2</sup>
Elongation	660%	580%	ASTM D412, modified <sup>3</sup>
Tensile strength	4000 psi (27.6 MPa)	4000 psi (27.6 MPa)	ASTM D412
Crack cycling at -9.4°F (-23°C), 100 cycles	Unaffected, Pass	Unaffected, Pass	ASTM C836
Puncture resistance	221 lbs (990 N)	100 lbs (445 N)	ASTM E154
Peel adhesion to concrete	5 lbs/in. (880 N/m)	5 lbs/in. (880 N/m)	ASTM D903, modified <sup>4</sup>
Lap peel adhesion	5 lbs/in. (880 N/m)	5 lbs/in. (880 N/m)	ASTM D1876, modified <sup>5</sup>
Permeance to water vapor transmission	0.01 perms (0.6 ng/(Pa × s × m <sup>2</sup> ))	0.01 perms (0.6 ng/(Pa × s × m <sup>2</sup> ))	ASTM E96, method B
Water absorption	0.5%	0.5%	ASTM D570

### Footnotes:

1. Lateral water migration resistance is tested by casting concrete against membrane with a hole and subjecting the membrane to hydrostatic head pressure with water. The test measures the resistance of lateral water migration between the concrete and the membrane.
2. Hydrostatic head tests of Preprufe Membranes are performed by casting concrete against the membrane with a lap. Before the concrete cures, a 0.125 in. (3 mm) spacer is inserted perpendicular to the membrane to create a gap. The cured block is placed in a chamber where water is introduced to the membrane surface up to the head indicated.
3. Elongation of membrane is run at a rate of 2 in. (50 mm) per minute.
4. Concrete is cast against the protective coating surface of the membrane and allowed to properly dry (7 days minimum). Peel adhesion of membrane to concrete is measured at a rate of 2 in. (50 mm) per minute at room temperature.
5. The test is conducted 15 minutes after the lap is formed (per Grace published recommendations) and run at a rate of 2 in. (50 mm) per minute.

## Specification Clauses

Preprufe 300R or 160R shall be applied with its adhesive face presented to receive fresh concrete to which it will integrally bond. Only Grace Construction Products approved membranes shall be bonded to Preprufe 300R/160R. All Preprufe 300R/160R system materials shall be supplied by Grace Construction Products, and applied strictly in accordance with their instructions. Specimen performance and formatted clauses are also available.

NOTE: Use Preprufe Tape to tie-in Procor with Preprufe.

### Health and Safety

Refer to relevant Material Safety data sheet. Complete rolls should be handled by a minimum of two persons.

[www.graceconstruction.com](http://www.graceconstruction.com)

For technical assistance call toll free at 866-333-3SBM (3726)

Adcor is a trademark and Preprufe, Bituthene and Hydroduct are registered trademarks of W. R. Grace & Co.—Conn.

Procor is a U.S. registered trademark of W. R. Grace & Co.—Conn., and is used in Canada under license from PROCOR LIMITED.

We hope the information here will be helpful. It is based on data and knowledge considered to be true and accurate and is offered for the users' consideration, investigation and verification, but we do not warrant the results to be obtained. Please read all statements, recommendations or suggestions in conjunction with our conditions of sale, which apply to all goods supplied by us. No statement, recommendation or suggestion is intended for any use which would infringe any patent or copyright. W. R. Grace & Co.—Conn., 62 Whittemore Avenue, Cambridge, MA 02140. In Canada, Grace Canada, Inc., 294 Clements Road, West, Ajax, Ontario, Canada L1S 3C6.

This product may be covered by patents or patents pending.  
PF-111G Printed in U.S.A. 6/11

Copyright 2011. W. R. Grace & Co.—Conn.  
FA/PDF

GRACE

**Addendum 4**  
Signage



# NYC Voluntary Cleanup Program

This property is enrolled in the New York City Voluntary Cleanup Program for environmental remediation. This is a voluntary program administered by the NYC Office of Environmental Remediation.

For more information, log on to:  
**[www.nyc.gov/oer](http://www.nyc.gov/oer)**

If you have questions or would like more information,  
please contact:

Shaminder Chawla at (212) 788-8841  
or email us at [brownfields@cityhall.nyc.gov](mailto:brownfields@cityhall.nyc.gov)

249 North 7th Street (Site A) &  
248 North 8th Street (Site B)

Site #: 112CVCP068K (Site A) &  
12CVCP069K (Site B)