

# **APPENDIX B**

## **SOIL BORING GEOLOGIC LOGS**

**Project: 875 4th Avenue**  
**Project Location: 875 4th Avenue Brooklyn, New York**  
**Project Number: OER Project # 16EH-A242K**

# Log of Boring SB-1

Sheet 1 of 1

Date(s) Drilled <b>May 4, 2016</b>	Logged By <b>Richard Levato</b>	Checked By <b>Richard Levato</b>
Drilling Method <b>Direct Push</b>	Drill Bit Size/Type <b>2 inch Direct Push</b>	Total Depth of Borehole <b>16 feet bgs</b>
Drill Rig Type <b>Geoprobe 5410 DT</b>	Drilling Contractor <b>JC Broderick</b>	Approximate Surface Elevation <b>23 feet</b>
Groundwater Level and Date Measured <b>Not Encountered ATD</b>	Sampling Method(s) <b>Mirco core</b>	Hammer Data
Borehole Backfill <b>Cuttings and Asphalt Patch</b>	Location <b>SB-1 North entrance of site.</b>	

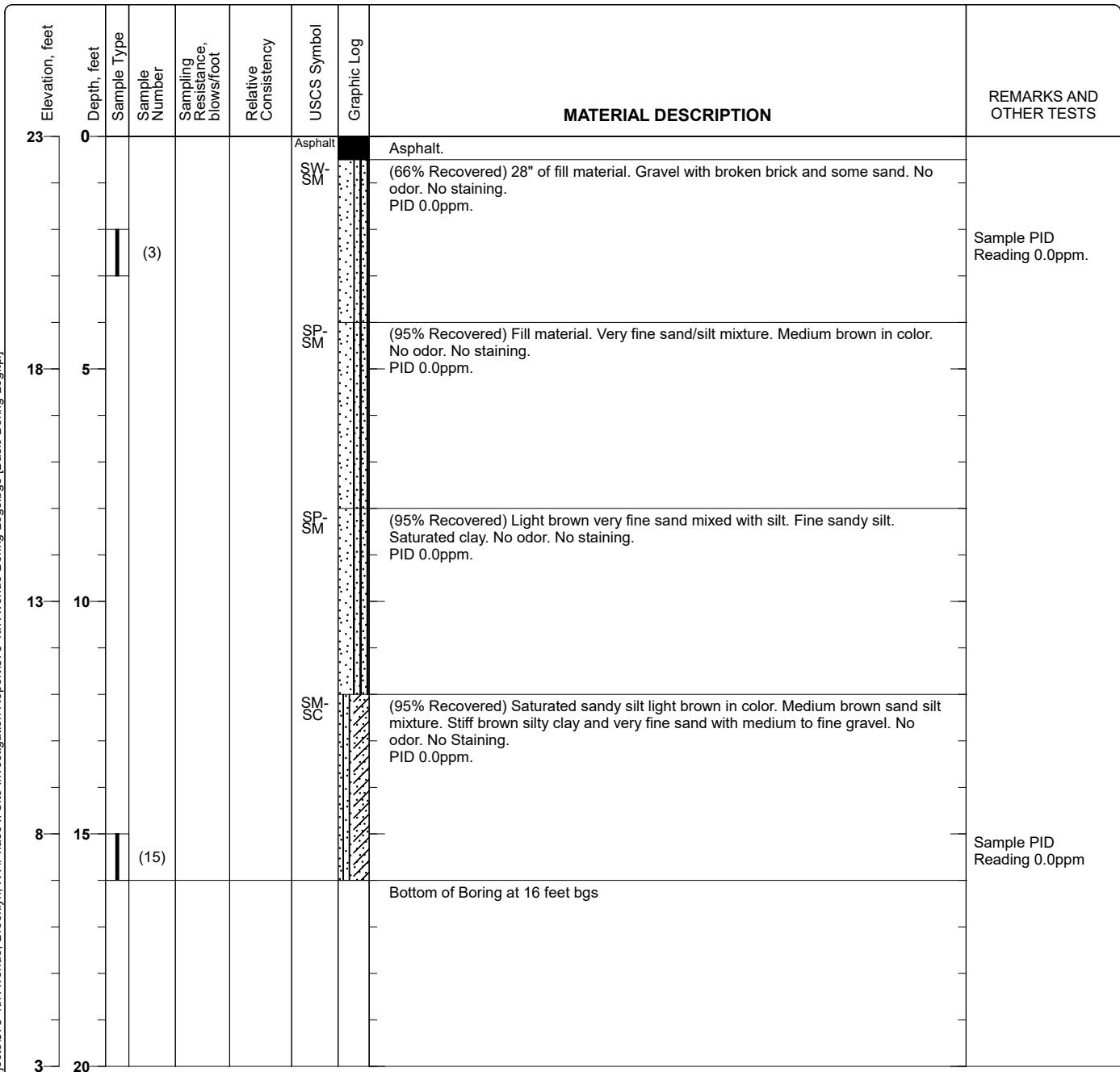


Figure 1

**Project: 875 4th Avenue**  
**Project Location: 875 4th Avenue Brooklyn, New York**  
**Project Number: OER Project # 16EH-A242K**

## Log of Boring SB-2

Sheet 1 of 1

Date(s) Drilled <b>May 5, 2016</b>	Logged By <b>Richard Levato</b>	Checked By <b>Richard Levato</b>
Drilling Method <b>Direct Push</b>	Drill Bit Size/Type <b>2 inch Direct Push</b>	Total Depth of Borehole <b>16 feet bgs</b>
Drill Rig Type <b>Geoprobe 5410 DT</b>	Drilling Contractor <b>JC Broderick</b>	Approximate Surface Elevation <b>24 feet</b>
Groundwater Level and Date Measured <b>Not Encountered ATD</b>	Sampling Method(s) <b>Mirco core</b>	Hammer Data
Borehole Backfill <b>Cuttings</b>	Location <b>SB-2 Western part of site on the side of building</b>	

Elevation, feet	Depth, feet	Sample Type	Sample Number	Sampling Resistance, blows/foot	Relative Consistency	USCS Symbol	Graphic Log	MATERIAL DESCRIPTION	REMARKS AND OTHER TESTS
24	0					Other		Grass	
			(2)			GP-GM		(80% Recovered) Fine grain sand with coarse gravel. Fine grain brown sandy silt with fine gravel. No odor. No staining. PID 0.0ppm.	Sample PID Reading 0.0ppm.
19	5					GP-GM		(75% Recovered) Brown sandy silt. Fine sand silt with fine grade gravel. Brown sandy silt with fine to coarse gravel. Finer brown silt sand. No odor. No staining. PID 0.0ppm.	
14	10					SM-C		(100% Recovered) Very fine brown sandy silt with some clay. Fine gravel in dark brown fine sand. Sandy brown silt, blackish silt sand and clay silt sand, fine grade and dark brown in color. No odor. No staining. PID 0.0ppm.	
						SM-ML		(100% Recovered) Blackish brown clay. Saturated brown sandy silt. No odor. No Staining. PID 0.0ppm.	
9	15		(16)						Sample PID Reading 0.0ppm
								Bottom of Boring at 16 feet bgs	
4	20								

Figure 2

**Project: 875 4th Avenue**  
**Project Location: 875 4th Avenue Brooklyn, New York**  
**Project Number: OER Project # 16EH-A242K**

## Log of Boring SB-3

Sheet 1 of 1

Date(s) Drilled <b>May 3, 2016</b>	Logged By <b>Richard Levato</b>	Checked By <b>Richard Levato</b>
Drilling Method <b>Direct Push</b>	Drill Bit Size/Type <b>2 inch Direct Push</b>	Total Depth of Borehole <b>16 feet bgs</b>
Drill Rig Type <b>Geoprobe 5410 DT</b>	Drilling Contractor <b>JC Broderick</b>	Approximate Surface Elevation <b>23 feet</b>
Groundwater Level and Date Measured <b>Not Encountered ATD</b>	Sampling Method(s) <b>Mirco core</b>	Hammer Data
Borehole Backfill <b>Cuttings and Asphalt Patch</b>	Location <b>SB-3 Northern center of site</b>	






Elevation, feet	Depth, feet	Sample Type	Sample Number	Sampling Resistance, blows/foot	Relative Consistency	USCS Symbol	Graphic Log	MATERIAL DESCRIPTION	REMARKS AND OTHER TESTS
23	0					Asphalt		Asphalt.	
			(0-2)			SM		(80% Recovered) Medium to fine sand with little silt. No odor. No staining. PID 0.0ppm.	Sample PID Reading 0.0ppm.
18	5					SM		(80% Recovered) Brown sand mix with fine silt. No odor. No staining. PID 0.0ppm.	
13	10					SM		(70% Recovered) Fill material. Brown fine sand mixed with some silt. No odors. No staining. PID 0.0ppm	
8	15		(14-16)			SM-SC		(100% Recovered) Brown fine sand mixed with sand silt and medium dark clay. No odor. No staining. PID 0.0ppm.	Sample PID Reading 0.0ppm.
								Bottom of Boring at 16 feet bgs	
3	20								

Figure 3

**Project: 875 4th Avenue**  
**Project Location: 875 4th Avenue Brooklyn, New York**  
**Project Number: OER Project # 16EH-A242K**

# Log of Boring SB-4

Sheet 1 of 1

Date(s) Drilled <b>May 3, 2016</b>	Logged By <b>Richard Levato</b>	Checked By <b>Richard Levato</b>
Drilling Method <b>Direct Push</b>	Drill Bit Size/Type <b>2 inch Direct Push</b>	Total Depth of Borehole <b>16 feet bgs</b>
Drill Rig Type <b>Geoprobe 5410 DT</b>	Drilling Contractor <b>JC Broderick</b>	Approximate Surface Elevation <b>22 feet</b>
Groundwater Level and Date Measured <b>Not Encountered ATD</b>	Sampling Method(s) <b>Mirco core</b>	Hammer Data
Borehole Backfill <b>Cuttings and Asphalt Patch</b>	Location <b>SB-4 South East end of site</b>	

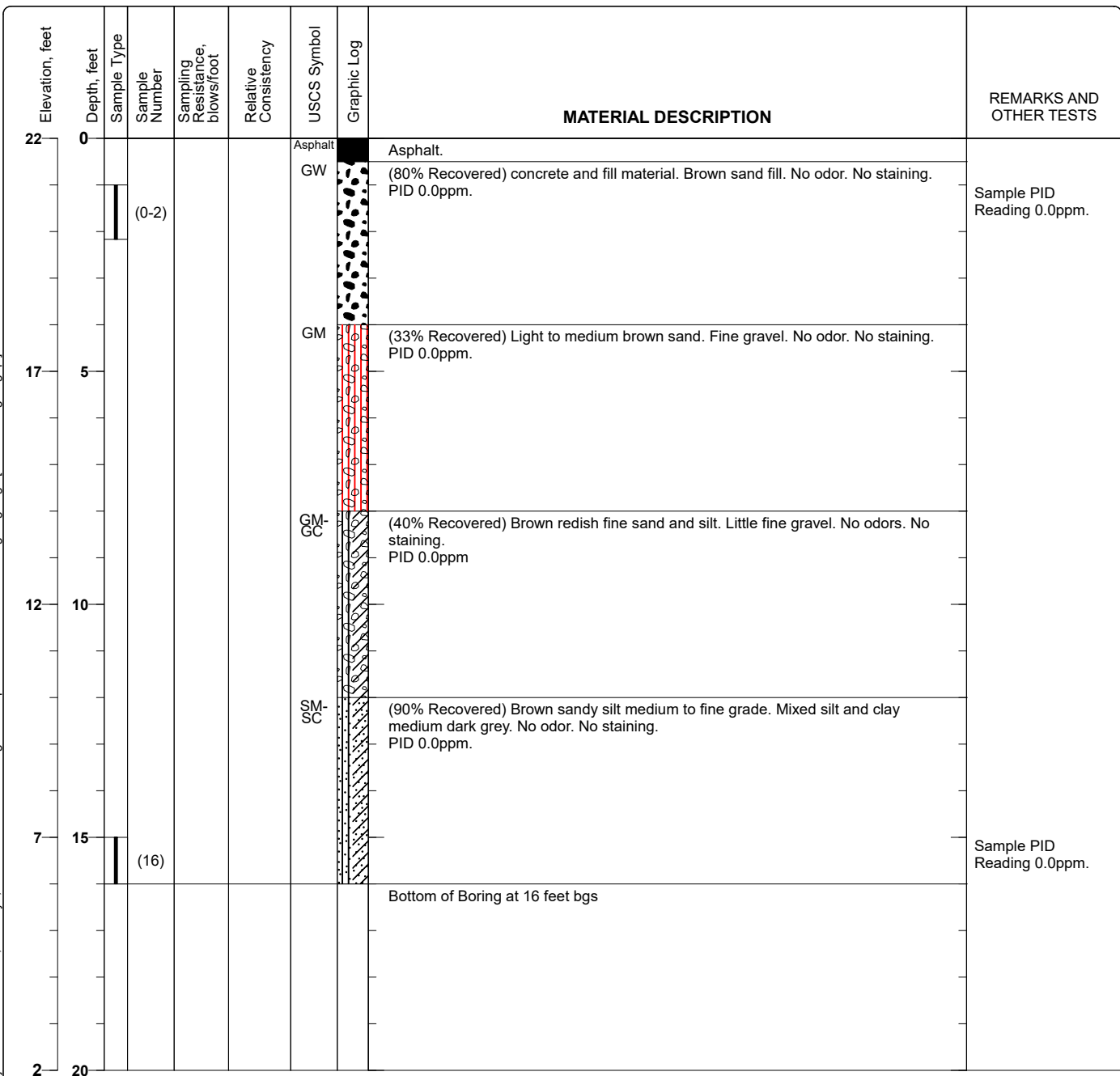


Figure 4

**Project: 875 4th Avenue**  
**Project Location: 875 4th Avenue Brooklyn, New York**  
**Project Number: OER Project # 16EH-A242K**

# Log of Boring SB-5

Sheet 1 of 1

Date(s) Drilled <b>May 3, 2016</b>	Logged By <b>Richard Levato</b>	Checked By <b>Richard Levato</b>
Drilling Method <b>Direct Push</b>	Drill Bit Size/Type <b>2 inch Direct Push</b>	Total Depth of Borehole <b>20 feet bgs</b>
Drill Rig Type <b>Geoprobe 5410 DT</b>	Drilling Contractor <b>JC Broderick</b>	Approximate Surface Elevation <b>23 feet</b>
Groundwater Level and Date Measured <b>Not Encountered ATD</b>	Sampling Method(s) <b>Mirco core</b>	Hammer Data
Borehole Backfill <b>Cuttings and Asphalt Patch</b>	Location <b>SB-5 South End of Site</b>	

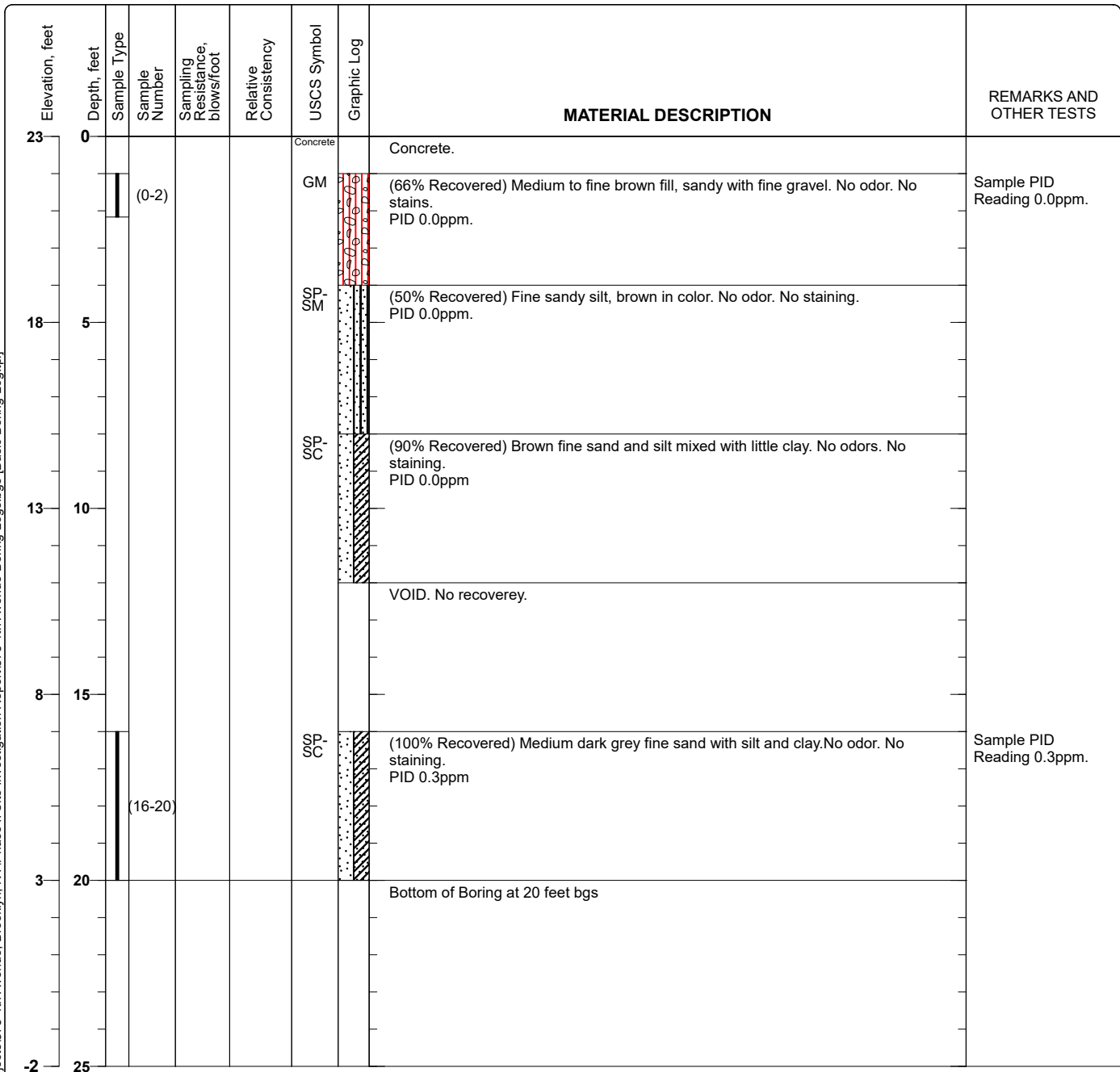


Figure 5

**Project: 875 4th Avenue**  
**Project Location: 875 4th Avenue Brooklyn, New York**  
**Project Number: OER Project # 16EH-A242K**

## Log of Boring SB-6

Sheet 1 of 1

Date(s) Drilled <b>May 3, 2016</b>	Logged By <b>Richard Levato</b>	Checked By <b>Richard Levato</b>
Drilling Method <b>Direct Push</b>	Drill Bit Size/Type <b>2 inch Direct Push</b>	Total Depth of Borehole <b>20 feet bgs</b>
Drill Rig Type <b>Geoprobe 5410 DT</b>	Drilling Contractor <b>JC Broderick</b>	Approximate Surface Elevation <b>22 feet</b>
Groundwater Level and Date Measured <b>Not Encountered ATD</b>	Sampling Method(s) <b>Mirco core</b>	Hammer Data
Borehole Backfill <b>Cuttings and Asphalt Patch</b>	Location <b>SB-6 North East end of site</b>	

Elevation, feet	Depth, feet	Sample Type	Sample Number	Sampling Resistance, blows/foot	Relative Consistency	USCS Symbol	Graphic Log	MATERIAL DESCRIPTION	REMARKS AND OTHER TESTS
22	0					Asphalt		Asphalt.	
			(0-2)			GW-GM		(80% Recovered) Fill material, brown fine sand with broken asphalt. No odor. No staining. PID 0.0ppm.	Sample PID Reading 0.0ppm.
17	5					GW-GM		(75% Recovered) Fill material, broken brick, large rock, ash, and brown sand silt. Mixed with fine sand. No odor. No staining. PID 0.0ppm.	
12	10					SM-SC		(60% Recovered) Brown sand mixed with fine sand with little clay. No odors. No staining. PID 0.0ppm	
						SM-SC		(90% Recovered) Brown sand with fine sand mixed with sandy silt at 13 to 14 ft. Grey clay. No odor. No staining. PID 0.0ppm.	
7	15		(16)			SM-ML		(80% Recovered) Brown sandy silt with black sandy silt. PID 0.5ppm.	Sample PID Reading 0.0ppm.
			(18-19)						Sample PID Reading 0.5ppm
2	20							Bottom of Boring at 20 feet bgs	
-3	25								

Figure 6

**Project: 875 4th Avenue**  
**Project Location: 875 4th Avenue Brooklyn, New York**  
**Project Number: OER Project # 16EH-A242K**

## Log of Boring SB-7

Sheet 1 of 1

Date(s) Drilled <b>May 5, 2016</b>	Logged By <b>Richard Levato</b>	Checked By <b>Richard Levato</b>
Drilling Method <b>Direct Push</b>	Drill Bit Size/Type <b>2 inch Direct Push</b>	Total Depth of Borehole <b>16 feet bgs</b>
Drill Rig Type <b>Geoprobe 5410 DT</b>	Drilling Contractor <b>JC Broderick</b>	Approximate Surface Elevation <b>25 feet</b>
Groundwater Level and Date Measured <b>Not Encountered ATD</b>	Sampling Method(s) <b>Mirco core</b>	Hammer Data
Borehole Backfill <b>Cuttings</b>	Location <b>SB-7 Most Western part of site.</b>	

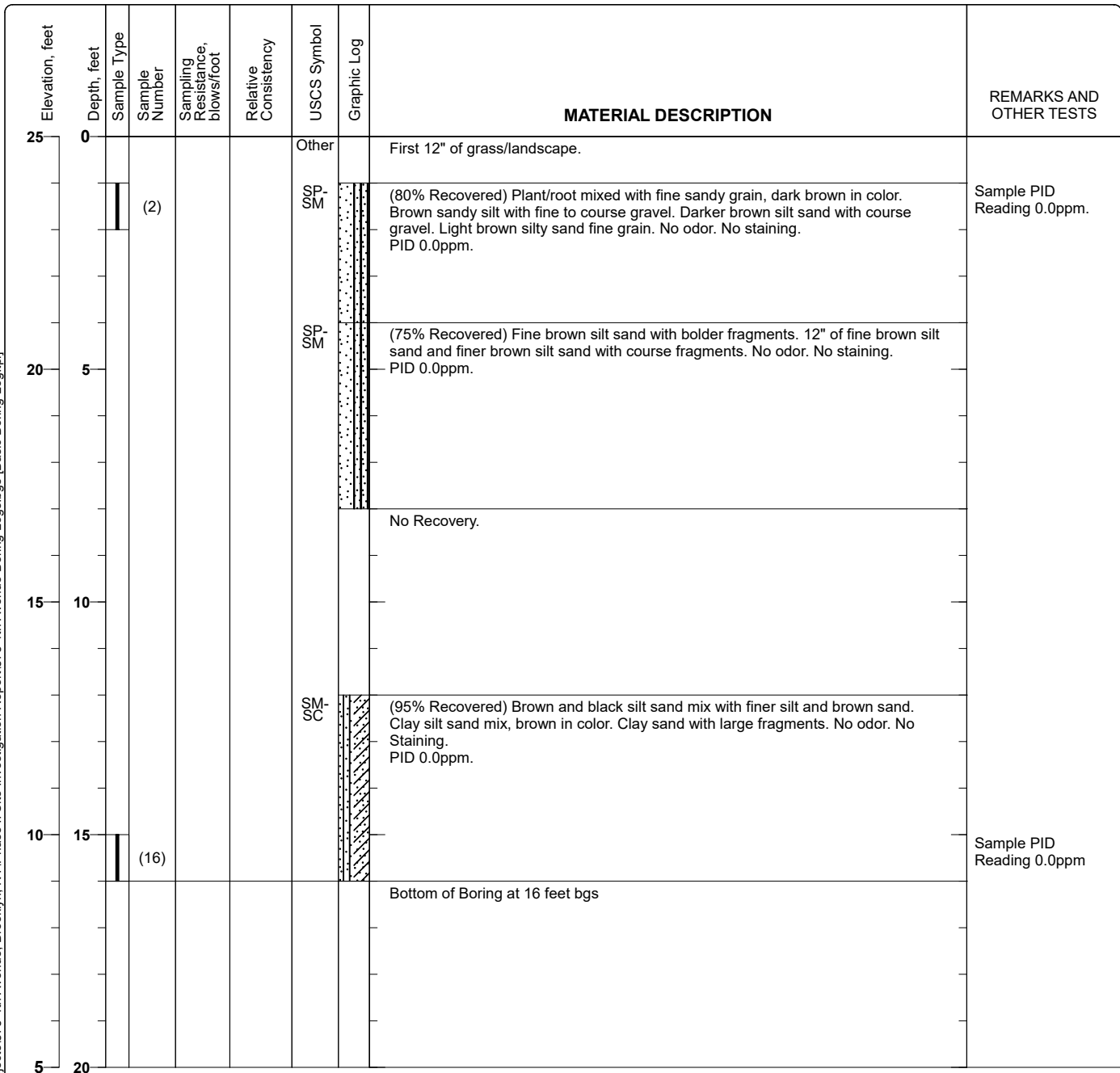


Figure 7



**Project: 875 4th Avenue**  
**Project Location: 875 4th Avenue Brooklyn, New York**  
**Project Number: OER Project # 16EH-A242K**

## Log of Boring SB-8

Sheet 1 of 1

Date(s) Drilled <b>May 4, 2016</b>	Logged By <b>Richard Levato</b>	Checked By <b>Richard Levato</b>
Drilling Method <b>Direct Push</b>	Drill Bit Size/Type <b>2 inch Direct Push</b>	Total Depth of Borehole <b>16 feet bgs</b>
Drill Rig Type <b>Geoprobe 5410 DT</b>	Drilling Contractor <b>JC Broderick</b>	Approximate Surface Elevation <b>23 feet</b>
Groundwater Level and Date Measured <b>Not Encountered ATD</b>	Sampling Method(s) <b>Mirco core</b>	Hammer Data
Borehole Backfill <b>Cuttings and Asphalt Patch</b>	Location <b>SB-8 North end of site</b>	

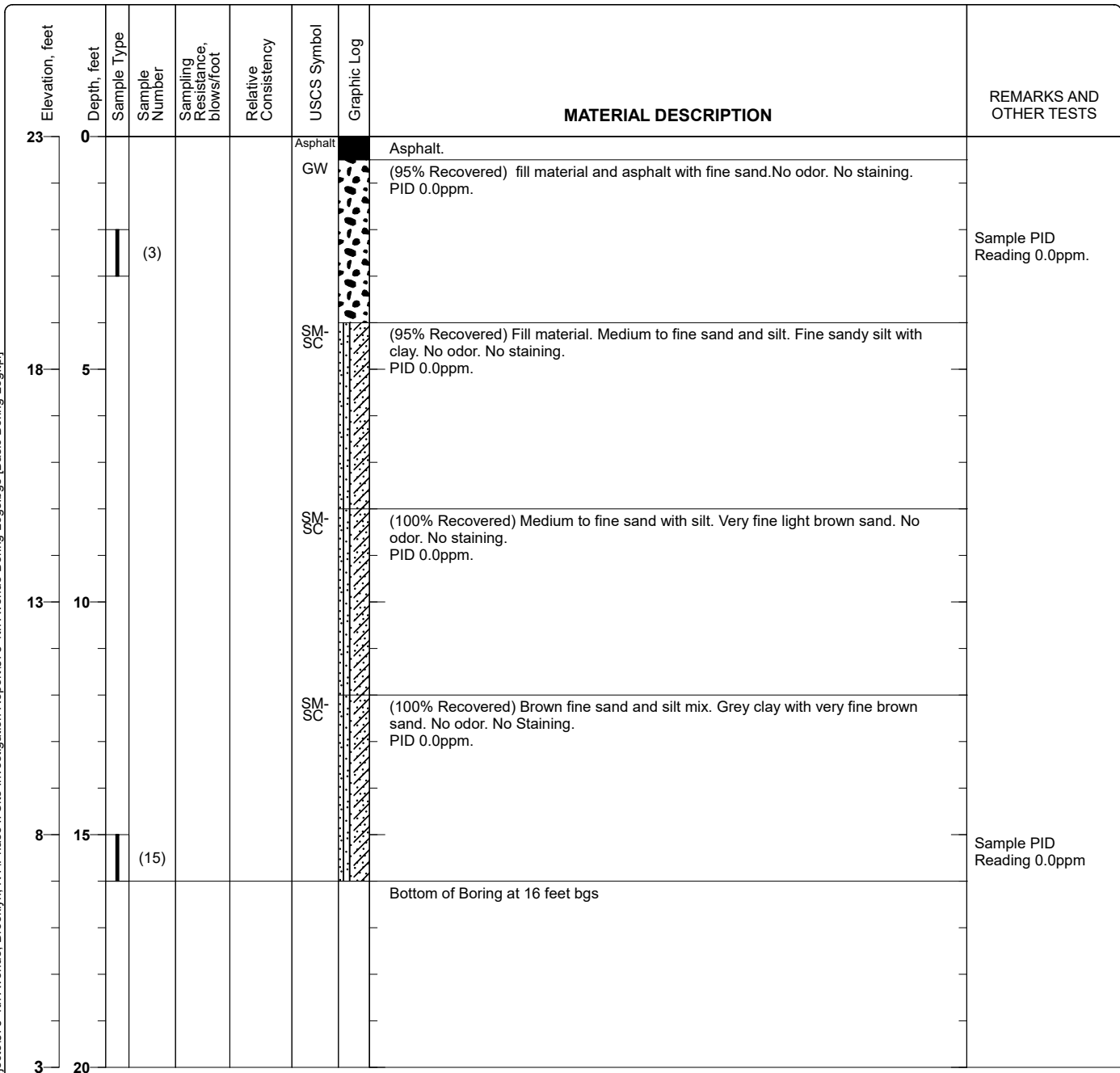


Figure 8

**Project: 875 4th Avenue**  
**Project Location: 875 4th Avenue Brooklyn, New York**  
**Project Number: OER Project # 16EH-A242K**

## Log of Boring MW-8

Sheet 1 of 1

Date(s) Drilled <b>May 4, 2016</b>	Logged By <b>Richard Levato</b>	Checked By <b>Richard Levato</b>
Drilling Method <b>Direct Push</b>	Drill Bit Size/Type <b>2 inch Direct Push</b>	Total Depth of Borehole <b>24 feet bgs</b>
Drill Rig Type <b>Geoprobe 5410 DT</b>	Drilling Contractor <b>JC Broderick</b>	Approximate Surface Elevation <b>22 feet</b>
Groundwater Level and Date Measured <b>24&amp;apos;</b>	Sampling Method(s) <b>Mirco core</b>	Hammer Data
Borehole Backfill <b>#2 Well Sand</b>	Location <b>MW-8 South east end of site</b>	







Elevation, feet	Depth, feet	Sample Type	Sample Number	Sampling Resistance, blows/foot	Relative Consistency	USCS Symbol	Graphic Log	MATERIAL DESCRIPTION	REMARKS AND OTHER TESTS
22	0					Asphalt		Asphalt. No Recovery.	
17	5					GW-GM		(50% Recovered) medium to light brown fine sand. Some medium to fine gravel. Fine sand with some silt. No odor. No staining. PID 0.0ppm.	
12	10					SP-SM		(100% Recovered) Medium to fine sand with little silt. 14" of light brown sand with silt. No odor. No staining. PID 0.0ppm.	
7	15		(15)			SM-SC		(100% Recovered) Dark brown/black sitly clay Medium to fine sand with silt and fine sand with light brown clay. No odor. No staining. PID 0.0ppm.	Sample PID Reading 0.0ppm.
2	20					SM-SC		(100% Recovered) Brown sand, clay mixed with silt, and fine dark to light brown sand. No odor. No Staining. PID 0.0ppm.	
			(24)			SP-SM		(100% Recovered) Light brown fine sand mixed with silt. Saturated light brown fine sand and silt. Ground Water encountered. No odors. No staining PID 0.0ppm.	Sample PID Reading 0.0ppm
-3	25							Bottom of Boring at 24 feet bgs	

Figure 9

**Project: 875 4th Avenue**  
**Project Location: 875 4th Avenue Brooklyn, New York**  
**Project Number: OER Project # 16EH-A242K**

## Log of Boring MW-9

Sheet 1 of 1

Date(s) Drilled <b>May 4, 2016</b>	Logged By <b>Richard Levato</b>	Checked By <b>Richard Levato</b>
Drilling Method <b>Direct Push</b>	Drill Bit Size/Type <b>2 inch Direct Push</b>	Total Depth of Borehole <b>28 feet bgs</b>
Drill Rig Type <b>Geoprobe 5410 DT</b>	Drilling Contractor <b>JC Broderick</b>	Approximate Surface Elevation <b>23 feet</b>
Groundwater Level and Date Measured <b>28'</b>	Sampling Method(s) <b>Mirco core</b>	Hammer Data
Borehole Backfill <b>#2 Well Sand</b>	Location <b>MW-9 South end of site</b>	

Elevation, feet	Depth, feet	Sample Type	Sample Number	Sampling Resistance, blows/foot	Relative Consistency	USCS Symbol	Graphic Log	MATERIAL DESCRIPTION	REMARKS AND OTHER TESTS
23	0					Asphalt GW-GM		Asphalt.	
			(3)			SP-SM		(50% Recovered) fill material, 24" medium to light brown fine sand with silt. No odor. No staining. PID 0.0ppm.	Sample PID Reading 0.0ppm.
18	5					SM-SC		(50% Recovered) Light brown fine sand and silt mix. Fine sand and silt with rock. No odor. No staining. PID 0.0ppm.	
13	10					SC-CL		(25% Recovered) Fine sand with light brown silt. Clay with fine sand. No odor. No staining. PID 0.0ppm.	
8	15		(15)			SC-CL		(100% Recovered) Medium to fine clay, sand mix, light brown in color. Light brown medium to fine silty sand. Stiff black/grey clay with very fine sand. No odor. No Staining. PID 0.0ppm.	Sample PID Reading 0.0ppm
3	20					SC-CL		(70% Recovered) Medium to dark clayey silt. Stiff dark clay. No odors. No staining PID 0.0ppm.	
								(0% Recovered)	
-2	25		(28)			SC-CL		(5% Recovered) Fine wet sandy silt. Some clay. No odor. No staining. PID 0.0ppm.	Sample PID 0.0ppm
			(GW)					Bottom of Boring at 28 feet bgs	Ground Water Sample at 28'
-7	30								

Figure 10

**Project: 875 4th Avenue**  
**Project Location: 875 4th Avenue Brooklyn, New York**  
**Project Number: OER Project # 16EH-A242K**

## Log of Boring MW-10

Sheet 1 of 1

Date(s) Drilled <b>May 3, 2016</b>	Logged By <b>Richard Levato</b>	Checked By <b>Richard Levato</b>
Drilling Method <b>Direct Push</b>	Drill Bit Size/Type <b>2 inch Direct Push</b>	Total Depth of Borehole <b>28 feet bgs</b>
Drill Rig Type <b>Geoprobe 5410 DT</b>	Drilling Contractor <b>JC Broderick</b>	Approximate Surface Elevation <b>23 feet</b>
Groundwater Level and Date Measured <b>28'±;</b>	Sampling Method(s) <b>Mirco core</b>	Hammer Data
Borehole Backfill <b>#2 Well Sand</b>	Location <b>MW-10 West side of site</b>	









Elevation, feet	Depth, feet	Sample Type	Sample Number	Sampling Resistance, blows/foot	Relative Consistency	USCS Symbol	Graphic Log	MATERIAL DESCRIPTION	REMARKS AND OTHER TESTS
23	0					Asphalt		Asphalt.	
			(2)			SP-SM		(90% Recovered) Brown sandy fine grain. Black/grey asphalt with concrete and sand fill. Brown fine sandy silt and dark brown sand fine grade gravel mix. No odor. No staining. PID 0.0ppm.	Sample PID Reading 0.0ppm.
18	5					SP-SM		(85% Recovered) Sandy fine grain gravel mix with brown medium grain sand and gravel. Brown fine grain sand with medium gravel fragments. No odor. No staining. PID 0.0ppm.	
13	10		(10.5)			SP-SM		(80% Recovered) Fine gravel and sand mix. Tan brown fine sand with sandy silt. Oder WAS detected. No staining. PID 0.6ppm (Top) PID 0.5ppm (Bottom) PID 31.5 (Sample Source)	Sample PID Reading 31.5ppm.
8	15					SM-SC		(70% Recovered) Sandy silt with grey/brown clay. No odor. No staining. PID 0.0ppm.	
3	20					SM-SC		(70% Recovered) Grey clay with sandy silt clay, grey tan color. No odor. No Staining. PID 0.0ppm.	
-2	25		(24)			SM-SC		(70% Recovered) Clay brown and grey in color. Sandy silt fine grain light saturation. Medium grain sand with shell fragments. No odors. No staining PID 0.0ppm.	Sample PID Reading 0.0ppm
-7	30		(GW)			SM-SC		(100% Recovered) Sandy silt, very fine, wet to saturated. No odor. No staining. PID 0.0ppm.	Ground Water Collected at 28'±;
								Bottom of Boring at 28 feet bgs	

Figure 11

**Project: 875 4th Avenue**  
**Project Location: 875 4th Avenue Brooklyn, New York**  
**Project Number: OER Project # 16EH-A242K**

# Log of Boring MW-11

Sheet 1 of 1

Date(s) Drilled <b>May 3, 2016</b>	Logged By <b>Richard Levato</b>	Checked By <b>Richard Levato</b>
Drilling Method <b>Direct Push</b>	Drill Bit Size/Type <b>2 inch Direct Push</b>	Total Depth of Borehole <b>28 feet bgs</b>
Drill Rig Type <b>Geoprobe 5410 DT</b>	Drilling Contractor <b>JC Broderick</b>	Approximate Surface Elevation <b>23 feet</b>
Groundwater Level and Date Measured <b>25&amp;apos;</b>	Sampling Method(s) <b>Mirco core</b>	Hammer Data
Borehole Backfill <b>#2 Well Sand</b>	Location <b>MW-11 Northern end of the site</b>	

Elevation, feet	Depth, feet	Sample Type	Sample Number	Sampling Resistance, blows/foot	Relative Consistency	USCS Symbol	Graphic Log	MATERIAL DESCRIPTION	REMARKS AND OTHER TESTS
23	0					Asphalt		Asphalt.	
			(0-2)			SW-SM		(70% Recovered) Fill material, broken brick, cider ash, and brown sand. No odor. No staining. PID 0.0ppm.	Sample PID Reading 0.0ppm.
18	5					SP-SM		(75% Recovered) Brown medium to fine sand, sand mixed with silt. No odor. No staining. PID 0.0ppm.	
13	10					SP-SM		(60% Recovered) Medium to fine sand. Light brown/orange. No odors. No staining. PID 0.0ppm	
8	15		(14)			SM-SC		(100% Recovered) Brown fine sand mixed with sand silt and medium dark clay. No odor. No staining. PID 0.0ppm.	Sample PID Reading 0.0ppm.
						SM-SC		(90% Recovered) Fill material, broken brick, fine sand brown in color. Grey silt. No odor. No Staining. PID 0.0ppm.	
3	20					SM-ML		(100% Recovered) Brown sand coarse to fine sand. No odors. No staining PID 0.0ppm.	
-2	25		(25)			SM-ML		(100% Recovered) coarse to medium sand. Fine gravel. Ground water encountered No odor. No staining. PID 0.0ppm.	Sample PID Reading 0.0ppm
			(GW)						Ground Water Collected at 25&apos;
-7	30							Bottom of Boring at 28 feet bgs	

Figure 12

**Project: 875 4th Avenue**  
**Project Location: 875 4th Avenue Brooklyn, New York**  
**Project Number: OER Project # 16EH-A242K**

# Log of Boring VP-1

Sheet 1 of 1

Date(s) Drilled <b>May 5, 2016</b>	Logged By <b>Richard Levato</b>	Checked By <b>Richard Levato</b>
Drilling Method <b>Direct Push</b>	Drill Bit Size/Type <b>2 inch Direct Push</b>	Total Depth of Borehole <b>20 feet bgs</b>
Drill Rig Type <b>Geoprobe 5410 DT</b>	Drilling Contractor <b>JC Broderick</b>	Approximate Surface Elevation <b>21 feet</b>
Groundwater Level and Date Measured <b>Not Encountered ATD</b>	Sampling Method(s) <b>Mirco core</b>	Hammer Data
Borehole Backfill <b>Well Sand</b>	Location <b>VP-1 Eastern corner of site.</b>	

Elevation, feet	Depth, feet	Sample Type	Sample Number	Sampling Resistance, blows/foot	Relative Consistency	USCS Symbol	Graphic Log	MATERIAL DESCRIPTION	REMARKS AND OTHER TESTS
21	0					Asphalt		Asphalt.	
			(2)			GW-GM		(100% Recovered) Sandy brown fine sand. Asphalt and concrete, light grey in color. Brown fine grade with medium to fine gravel. Fine brown sand with gravel. No odor. No staining. PID 0.0ppm.	Sample PID Reading 0.0ppm.
16	5					SP-SM		(95% Recovered) Fine dark brown sandy silt. Lighter brown sand silt fine grade. Redish brown silt. No odor. No staining. PID 0.0ppm.	
11	10					SP-SM		(95% Recovered) Fine sand silt with redish brown color. Brown sand silt. Redish sandy silt with medium to fine gravel. No odor. No staining. PID 0.0ppm.	
6	15		(16)					No Recovery.	Sample PID Reading 0.0ppm
			(VP)			SM-SC		(100% Recovered) Sandy silt mixed with clay. No odor. No staining. PID 0.0ppm.	Vapor Sample
1	20							Bottom of Boring at 20 feet bgs	
-4	25								

Figure 13

**Project: 875 4th Avenue**  
**Project Location: 875 4th Avenue Brooklyn, New York**  
**Project Number: OER Project # 16EH-A242K**

## Log of Boring VP-2

Sheet 1 of 1

Date(s) Drilled <b>May 5, 2016</b>	Logged By <b>Richard Levato</b>	Checked By <b>Richard Levato</b>
Drilling Method <b>Direct Push</b>	Drill Bit Size/Type <b>2 inch Direct Push</b>	Total Depth of Borehole <b>20 feet bgs</b>
Drill Rig Type <b>Geoprobe 5410 DT</b>	Drilling Contractor <b>JC Broderick</b>	Approximate Surface Elevation <b>23 feet</b>
Groundwater Level and Date Measured <b>Not Encountered ATD</b>	Sampling Method(s) <b>Mirco core</b>	Hammer Data
Borehole Backfill <b>Well Sand</b>	Location <b>VP-2 North of site by sign.</b>	




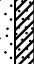


Elevation, feet	Depth, feet	Sample Type	Sample Number	Sampling Resistance, blows/foot	Relative Consistency	USCS Symbol	Graphic Log	MATERIAL DESCRIPTION	REMARKS AND OTHER TESTS
23	0					Asphalt		Asphalt.	
			(2)			SP-SC		(70% Recovered) Brown fine sand, light grey clay. Dark brown sandy fine silt. No odor. No staining. PID 0.0ppm.	Sample PID Reading 0.0ppm.
18	5					SP-SC		(90% Recovered) Dark brown sandy silt with grey coarse sand. Dark brown sandy silt fine grain. Broken brick fragments with very fine sandy silt. No odor. No staining. PID 0.0ppm.	
13	10					SP-SC		(80% Recovered) Lighter brown sandy silt with greyish brown sandy silt clay with brick fragments. No odor. No staining. PID 0.0ppm.	
8	15		(16)			SM-SC		(65% Recovered) Dark greyish sandy silt clay. Dark greyish clay. No odor. No Staining. PID 0.0ppm.	Sample PID Reading 0.0ppm
			(VP)			SM-SC		(95% Recovered) Brown clay silt with sand. Greyish clay. Brown clay sand. Medium grain sand with coarse gravel. No odor. No staining. PID 0.0ppm.	Vapor Sample
3	20							Bottom of Boring at 20 feet bgs	
-2	25								

Figure 14

**Project: 875 4th Avenue**  
**Project Location: 875 4th Avenue Brooklyn, New York**  
**Project Number: OER Project # 16EH-A242K**

## Log of Boring VP-3

Sheet 1 of 1

Date(s) Drilled <b>May 5, 2016</b>	Logged By <b>Richard Levato</b>	Checked By <b>Richard Levato</b>
Drilling Method <b>Direct Push</b>	Drill Bit Size/Type <b>2 inch Direct Push</b>	Total Depth of Borehole <b>20 feet bgs</b>
Drill Rig Type <b>Geoprobe 5410 DT</b>	Drilling Contractor <b>JC Broderick</b>	Approximate Surface Elevation <b>23 feet</b>
Groundwater Level and Date Measured <b>Not Encountered ATD</b>	Sampling Method(s) <b>Mirco core</b>	Hammer Data
Borehole Backfill <b>Well Sand</b>	Location <b>VP-3 South West section of site.</b>	






Elevation, feet	Depth, feet	Sample Type	Sample Number	Sampling Resistance, blows/foot	Relative Consistency	USCS Symbol	Graphic Log	MATERIAL DESCRIPTION	REMARKS AND OTHER TESTS
23	0					Asphalt		Asphalt. No. Recovery.	
18	5					SP-SM		(30% Recovered) Dark brown sand, fine. Dark brown sandy silt with fine to coarse gravel and shell fragments. No odor. No staining. PID 0.0ppm.	
13	10					SM-SC		(70% Recovered) Sandy silt with brown clay. Clay silt grey/brown in color. Fine sandy silt. No odor. No staining. PID 0.0ppm.	
8	15		(16)			SC-CL		(100% Recovered) Saturated silty clay. Grey clay and silty grey/brown clay. No odor. No staining.	Sample PID Reading 0.0ppm
			(VP)			SC-CL		(100% Recovered) Clay silt brown/grey in color. No odor. No staining. PID 0.0ppm.	Vapor Sample
3	20							Bottom of Boring at 20 feet bgs	
-2	25								

Figure 15



**Project: 875 4th Avenue**  
**Project Location: 875 4th Avenue Brooklyn, New York**  
**Project Number: OER Project # 16EH-A242K**

## Log of Boring VP-4

Sheet 1 of 1

Date(s) Drilled <b>May 5, 2016</b>	Logged By <b>Richard Levato</b>	Checked By <b>Richard Levato</b>
Drilling Method <b>Direct Push</b>	Drill Bit Size/Type <b>2 inch Direct Push</b>	Total Depth of Borehole <b>20 feet bgs</b>
Drill Rig Type <b>Geoprobe 5410 DT</b>	Drilling Contractor <b>JC Broderick</b>	Approximate Surface Elevation <b>24 feet</b>
Groundwater Level and Date Measured <b>Not Encountered ATD</b>	Sampling Method(s) <b>Mirco core</b>	Hammer Data
Borehole Backfill <b>Well Sand</b>	Location <b>VP-4 Western part of site in front of store entrance.</b>	

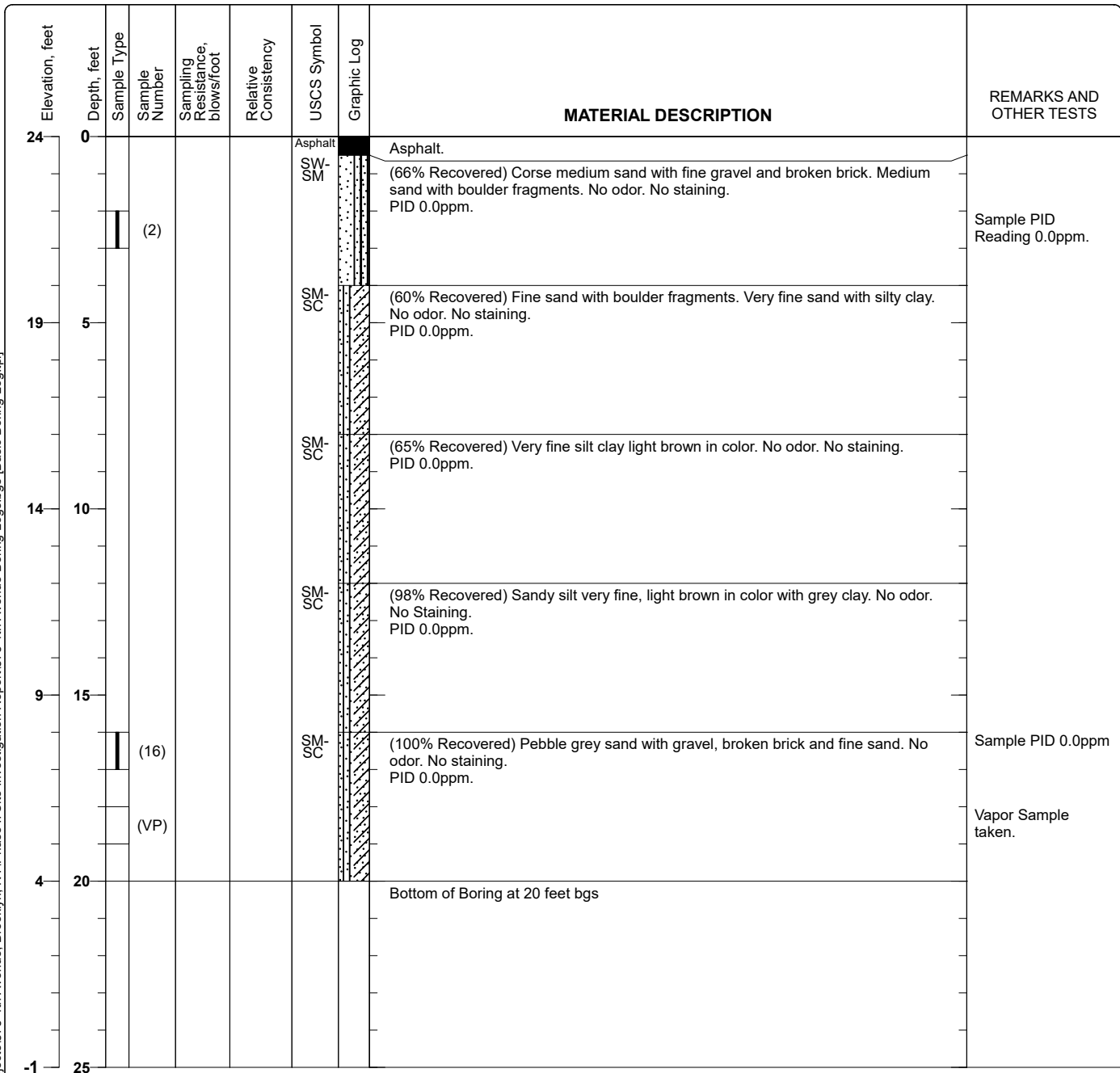


Figure 16