

# **Hazardous Materials Remedial Closure Report**

**For**

**108-40 Roosevelt Avenue (Lot 25); 108-42 Roosevelt Avenue (Lot 26); 108-46  
Roosevelt Avenue (Lot 27); 108-48 Roosevelt Avenue (Lot 28); 108-50  
Roosevelt Avenue (Lot 29); 108-52 Roosevelt Avenue (Lot 30); 108-54  
Roosevelt Avenue (Lot 31); 108-58 Roosevelt Avenue (Lot 33); 108-60  
Roosevelt Avenue (Lot 34); 108-68 Roosevelt Avenue (lot 39)**

**Queens, NY**

**Block 1996, Lots 25-31, 33, 34, & 39 (former lots 25, 31, 34, & 39)**

**OER Project Number: 19TMP0561Q**

**E-Designation Number: 19EHAZ212Q**

**Prepared for:**

Mr. John Po Sheng Hsu  
35-06 Farrington Street 2nd Floor  
Flushing, NY 11354

[joseph@metalstoneconstruction.com](mailto:joseph@metalstoneconstruction.com)

**Prepared by:**

J.R. Holzmacher P.E., LLC  
3555 Veterans Memorial Highway  
Ronkonkoma, NY 11779  
631-234-2220  
[mia@holzmacher.com](mailto:mia@holzmacher.com)

**OCTOBER 2022**

**PART 3 - FIGURES**



PREPARED BY:



**J.R. HOLZMACHER P.E., LLC**

*The Third Generation of Excellence  
In Water Supply, Water Resources,  
Civil and Environmental Engineering*

3555 VETERANS MEMORIAL HIGHWAY,  
SUITE A, RONKONKOMA, NY 11779  
PHONE # (631) 234-2220 FAX # (631) 234-2221  
E-MAIL: [info@holzmacher.com](mailto:info@holzmacher.com)

TITLE:

**SITE LOCATION MAP**

108-40 Roosevelt Avenue  
Corona, Queens, New York 11368

DWN: MFT	SCALE: 1" = 400'	DATE: 05/19/21	PROJECT NO.: KangM 1802
CHKD: MFT	APPD: JRH	REV.: -	NOTES: -
FIGURE NO.:		1	



P:\2018\KangM\18-02 - 108-40 Roosevelt Ave\Task 6 ?Remedial Closure Report (RCR)\Figs\CAD\App H - Site Boundary Map.dwg



R6B & C2-4	R6B & C2-4	R6B & C2-4	R6B & C2-4	R6B & C2-4	R6B & C2-4	R6B & C2-4	R6B & C2-4	R6B & C2-4	R6B & C2-4	R6B & C2-4	R6B & C2-4	R6B & C2-4	R6B & C2-4	R6B & C2-4	R6B & C2-4	R6B & C2-4	R6B & C2-4
------------	------------	------------	------------	------------	------------	------------	------------	------------	------------	------------	------------	------------	------------	------------	------------	------------	------------

# ROOSEVELT AVENUE


					LOT 25	LOT 26	LOT 27	LOT 28	LOT 29	LOT 30	LOT 31	LOT 33	LOT 34	LOT 39				
R6B & C2-4	R6B & C2-4	R6B & C2-4	R6B & C2-4	R6B & C2-4	R6B & C2-4	R6B & C2-4	R6B & C2-4	R6B & C2-4	R6B & C2-4	R6B & C2-4	R6B & C2-4	R6B & C2-4	R6B & C2-4	R6B & C2-4				
R5	R5	R5	R5	R5	R5	R5	R5	R5	R5	R5	R5	R5	R5	R5	R5	R5	R5	R5

111ST AVENUE

# 41ST AVENUE

R5	R5	R5	R5	R5	R5	R5	R5	R5	R5	R5	R5	R5	R5	R5	R5	R5
----	----	----	----	----	----	----	----	----	----	----	----	----	----	----	----	----

R5 = RESIDENTIAL DISTRICT  
R6B = RESIDENTIAL DISTRICT  
C2-4 = COMMERCIAL DISTRICT



**PREPARED BY:**

**J.R. HOLZMACHER P.E., LLC**

*The Third Generation of Excellence  
In Water Supply, Water Resources,  
Civil and Environmental Engineering*

3555 VETERANS MEMORIAL HIGHWAY,  
SUITE A, RONKONKOMA, NY 11779

PHONE # (631) 234-2220      FAX # (631) 234-2221  
E-MAIL: [info@holzmacher.com](mailto:info@holzmacher.com)

**TITLE:**

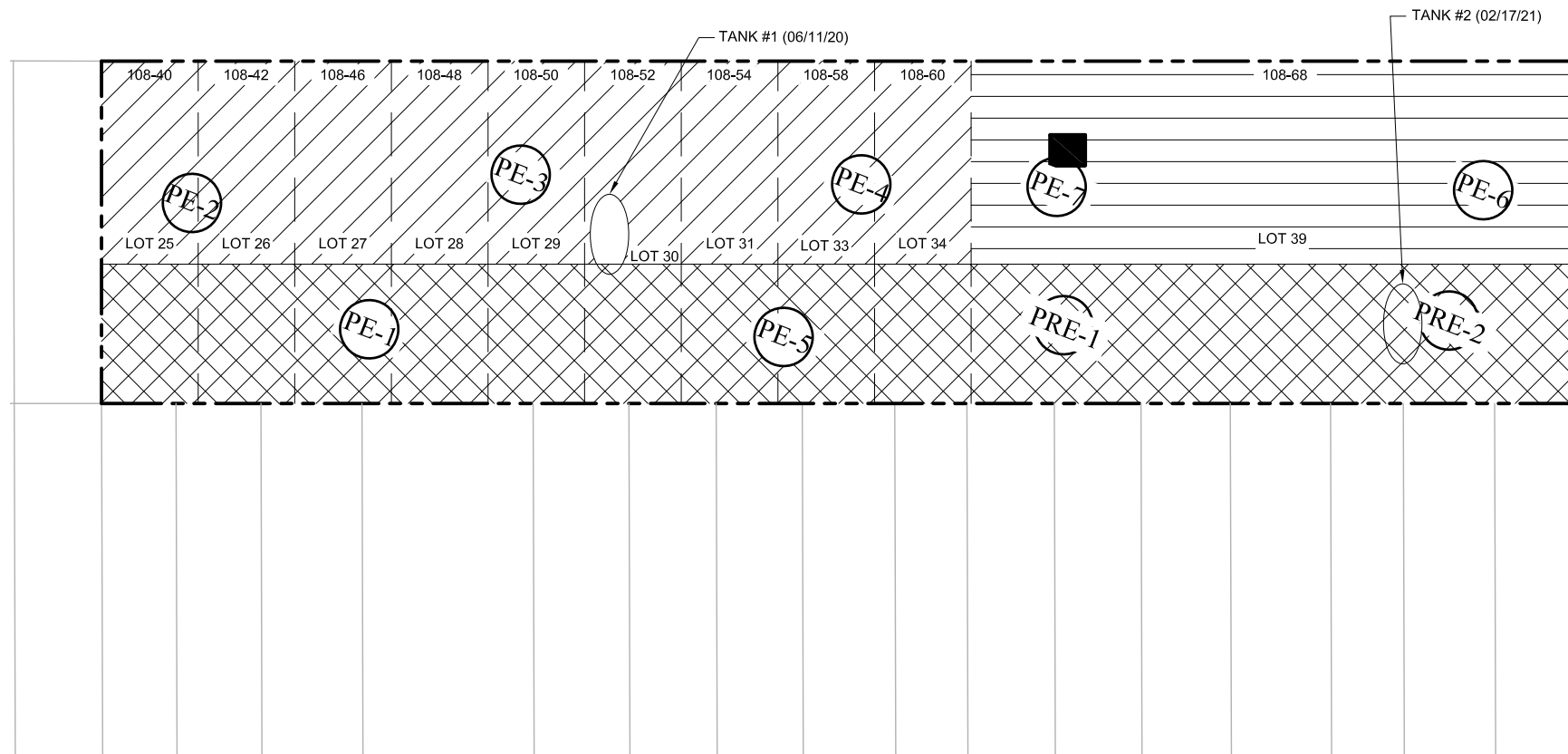
**SITE BOUNDARY MAP**

108-40 Roosevelt Avenue  
Corona, Queens, New York 11368

DWN: MFT	SCALE: 1" = 60'	DATE: 05/19/2021	PROJECT NO.: KangM 1802
CHKD: MFT	APPD: JRH	REV.: -	NOTES: -
FIGURE NO.: 2			



# ROOSEVELT AVENUE



111ST AVENUE

## LEGEND

ENDPOINT SAMPLES =

PRE-CAP SAMPLES =

PREPARED BY:



**J.R. HOLZMACHER P.E., LLC**

*The Third Generation of Excellence  
In Water Supply, Water Resources,  
Civil and Environmental Engineering*

3555 VETERANS MEMORIAL HIGHWAY,  
SUITE A, RONKONKOMA, NY 11779  
PHONE # (631) 234-2220 FAX # (631) 234-2221  
E-MAIL: info@holzmacher.com

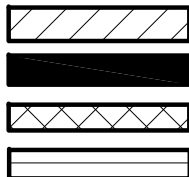
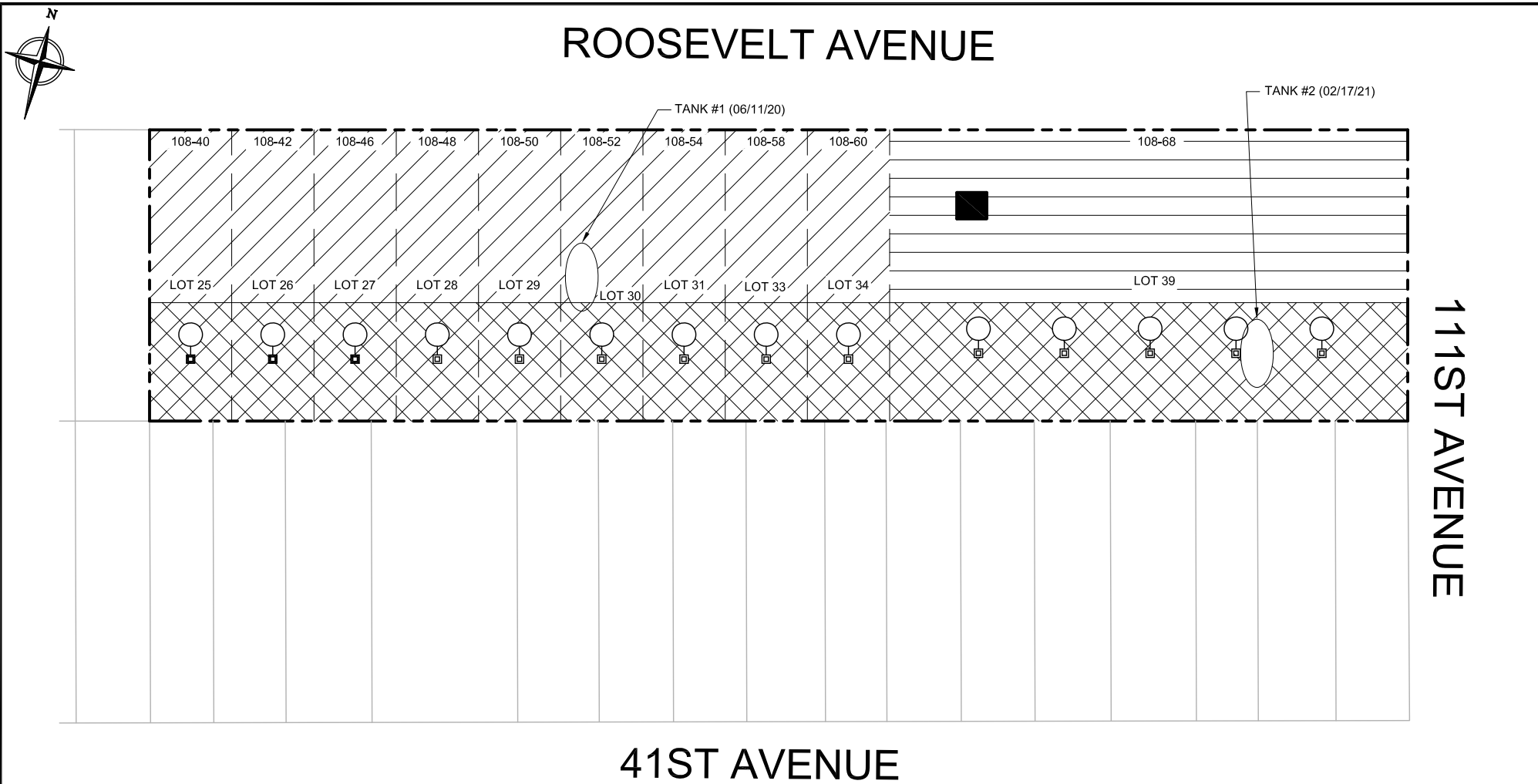
TITLE:

## MAP OF ENDPOINT SAMPLE LOCATIONS

108-40 Roosevelt Avenue  
Corona, Queens, New York 11368

DWN: MFT	SCALE: 1" = 50'	DATE: 05/19/21	PROJECT NO.: KangM 1802
CHKD: MFT	APPD: JRH	REV.: -	NOTES: -
FIGURE NO.:		3	

P:\2018\KangM\18-02 - 108-40 Roosevelt Ave\Task 6 ?Remedial Closure Report (RCR)\Figs\CAD\Figure 4 - Map of Excavations.dwg



EXCAVATED TO 12 FEET 5 INCHES BELOW GRADE

EXCAVATED 19 FEET BELOW GRADE

EXCAVATED 5 FEET BELOW GRADE

EXCAVATED TO 10 FEET BELOW GRADE



DRYWELL & CATCH BASIN

NOTE:

- ALL DRYWELLS 8'Ø x 5' DEEP

PREPARED BY:



**J.R. HOLZMACHER P.E., LLC**

*The Third Generation of Excellence  
In Water Supply, Water Resources,  
Civil and Environmental Engineering*

3555 VETERANS MEMORIAL HIGHWAY,  
SUITE A, RONKONKOMA, NY 11779  
PHONE # (631) 234-2220 FAX # (631) 234-2221  
E-MAIL: [info@holzmacher.com](mailto:info@holzmacher.com)

TITLE:

## MAP OF EXCAVATIONS

108-40 Roosevelt Avenue  
Corona, Queens, New York 11368

DWN:

MFT

SCALE:

1" = 50'

DATE:

05/19/2021

PROJECT NO.:

KangM 1802

CHKD:

MFT

APPD:

JRH

REV.:

07/01/2022

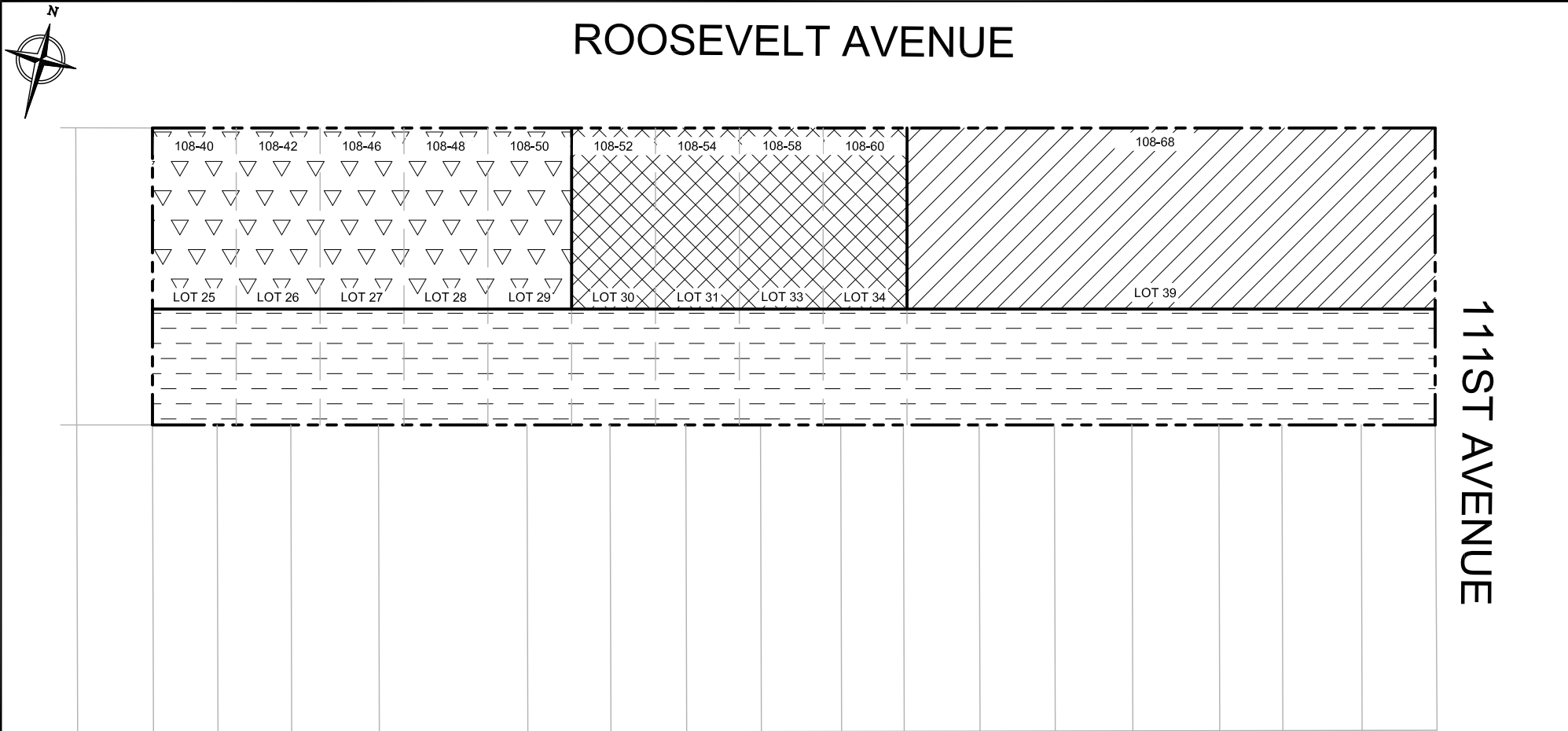
NOTES:

-

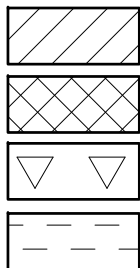
FIGURE NO.:

4

P:\2018\KangM\18-02 - 108-40 Roosevelt Ave\Task 6 ?Remedial Closure Report (RCR)\Figs\CAD\Figure 5 - Map of As Built Cover System.dwg



**LEGEND**



- STEGO WRAP 20-MIL VAPOR BARRIER
- STEGO WRAP 20-MIL VAPOR BARRIER & RETRO COAT 20-MIL VAPOR COATING
- RETRO COAT 20-MIL VAPOR COATING
- CONCRETE PAVEMENT

PREPARED BY:



**J.R. HOLZMACHER P.E., LLC**

*The Third Generation of Excellence  
In Water Supply, Water Resources,  
Civil and Environmental Engineering*

3555 VETERANS MEMORIAL HIGHWAY,  
SUITE A, RONKONKOMA, NY 11779  
PHONE # (631) 234-2220 FAX # (631) 234-2221  
E-MAIL: [info@holzmacher.com](mailto:info@holzmacher.com)

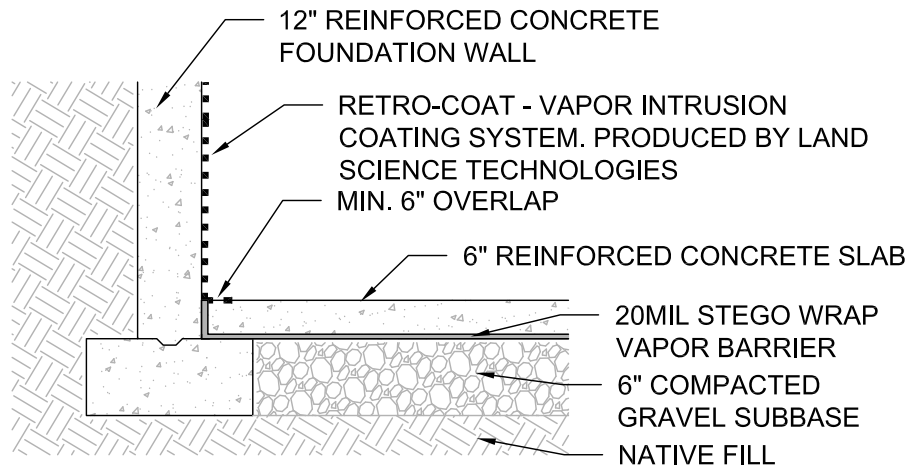
TITLE:

**MAP OF AS-BUILT COVER SYSTEM**

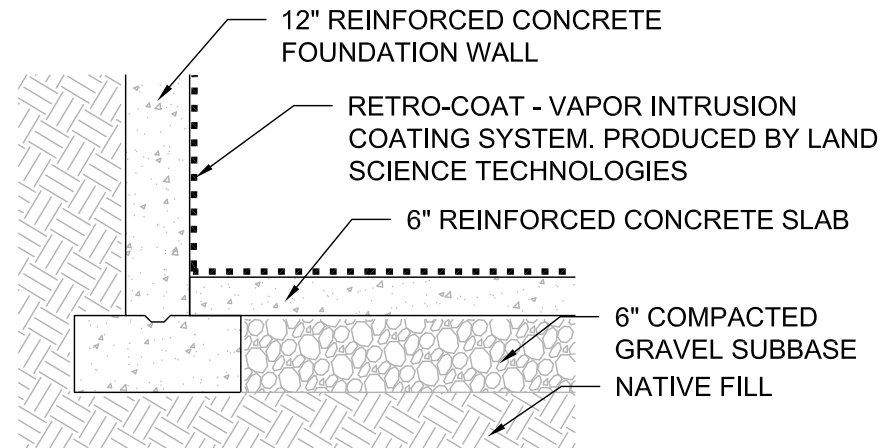
108-40 Roosevelt Avenue  
Corona, Queens, New York 11368

DWN: MFT	SCALE: 1" = 50'	DATE: 05/19/2021	PROJECT NO.: KangM 1802
CHKD: MFT	APPD: JRH	REV.: -	NOTES: -
FIGURE NO.:		5	

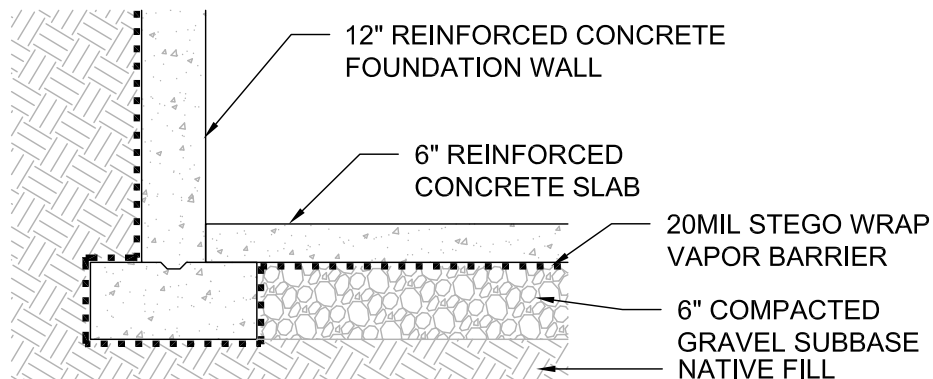
P:\2018\KangM\18-02 - 108-40 Roosevelt Ave\Task 6 - Remedial Closure Report (RCR)\Figs\CAD\Figure 6 - AS-BUILT Design Details for Cover Types.dwg



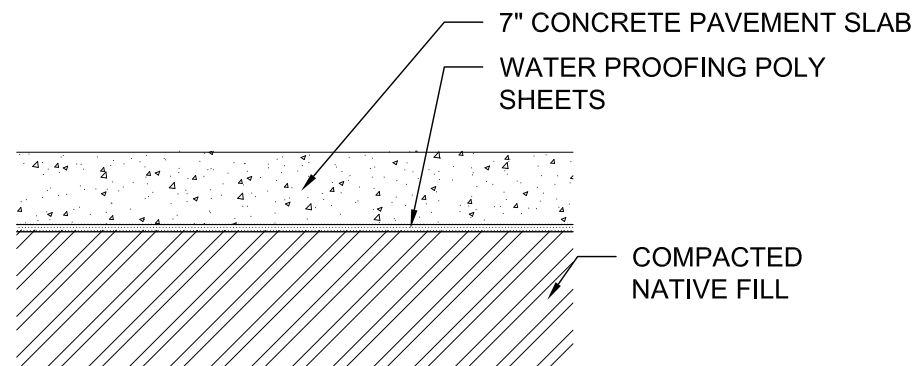
**BUILDING FOOTPRINT CONCRETE COVER SYSTEM FOR LOTS 30, 31, 33, & 34**



**BUILDING FOOTPRINT CONCRETE COVER SYSTEM FOR LOTS 25, 26, 27, 28, & 29**



**BUILDING FOOTPRINT CONCRETE COVER SYSTEM FOR LOT 39**



**CONCRETE COVER SYSTEM FOR LOTS 25, 26, 27, 28, 29, 30, 31, 33, 34, & 39**

PREPARED BY:

**J.R. HOLZMACHER P.E., LLC**

*The Third Generation of Excellence  
In Water Supply, Water Resources,  
Civil and Environmental Engineering*

3555 VETERANS MEMORIAL HIGHWAY,  
SUITE A, RONKONKOMA, NY 11779

PHONE # (631) 234-2220 FAX # (631) 234-2221  
E-MAIL: info@holzmacherp.com

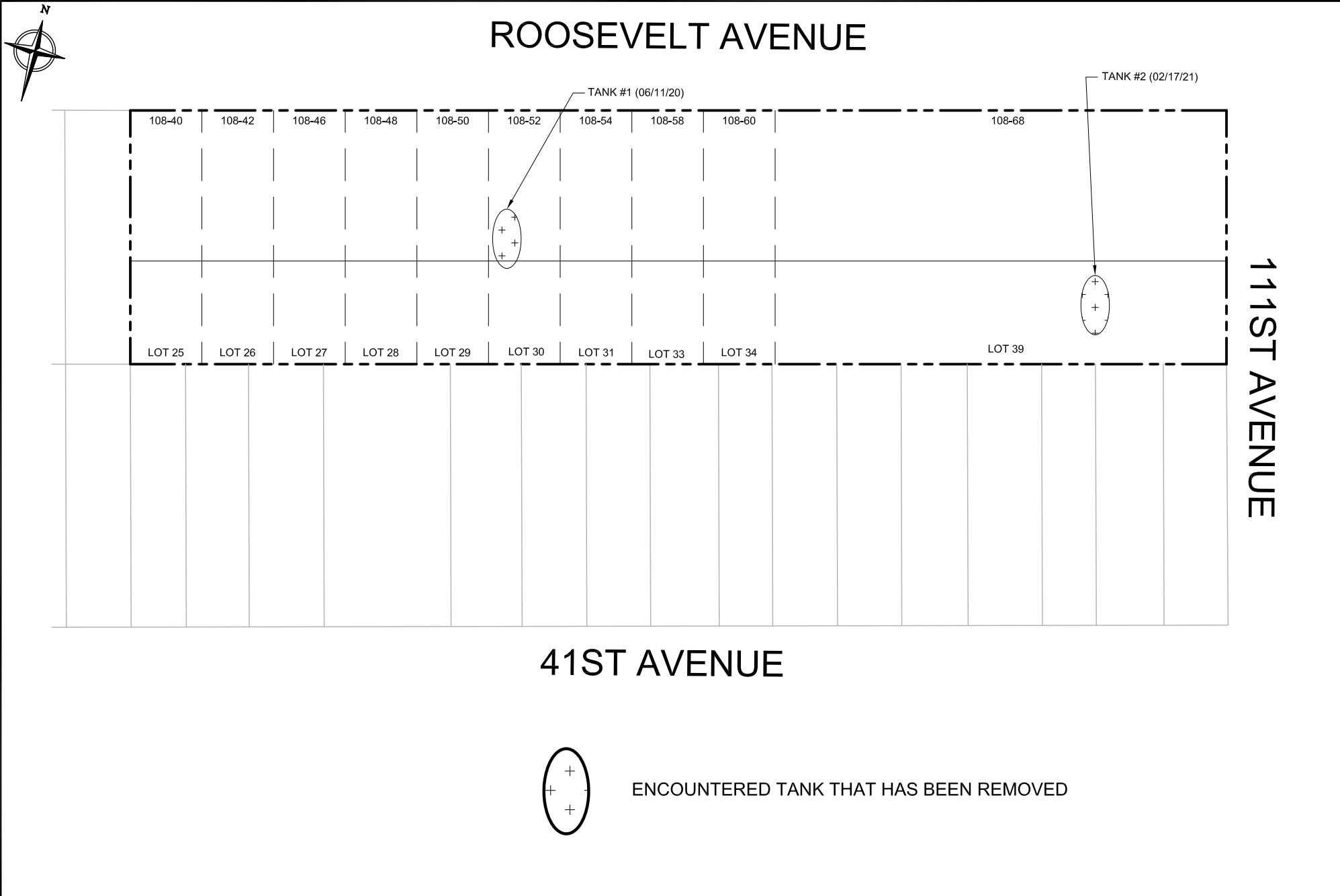
TITLE:


## AS-BUILT DESIGN DETAILS FOR COVER TYPES

108-40 Roosevelt Avenue  
Corona, Queens, New York 11368

DWN: MFT	SCALE: N.T.S.	DATE: 05/19/2021	PROJECT NO.: KangM 1802
CHKD: MFT	APPD: JRH	REV.: -	NOTES: -
FIGURE NO.:			6

P:\2018\KangM\18-02 - 108-40 Roosevelt Ave\Task 6 - Remedial Closure Report (RCR)\Figs\CAD\Figure 7 - Encountered Tank Locations.dwg

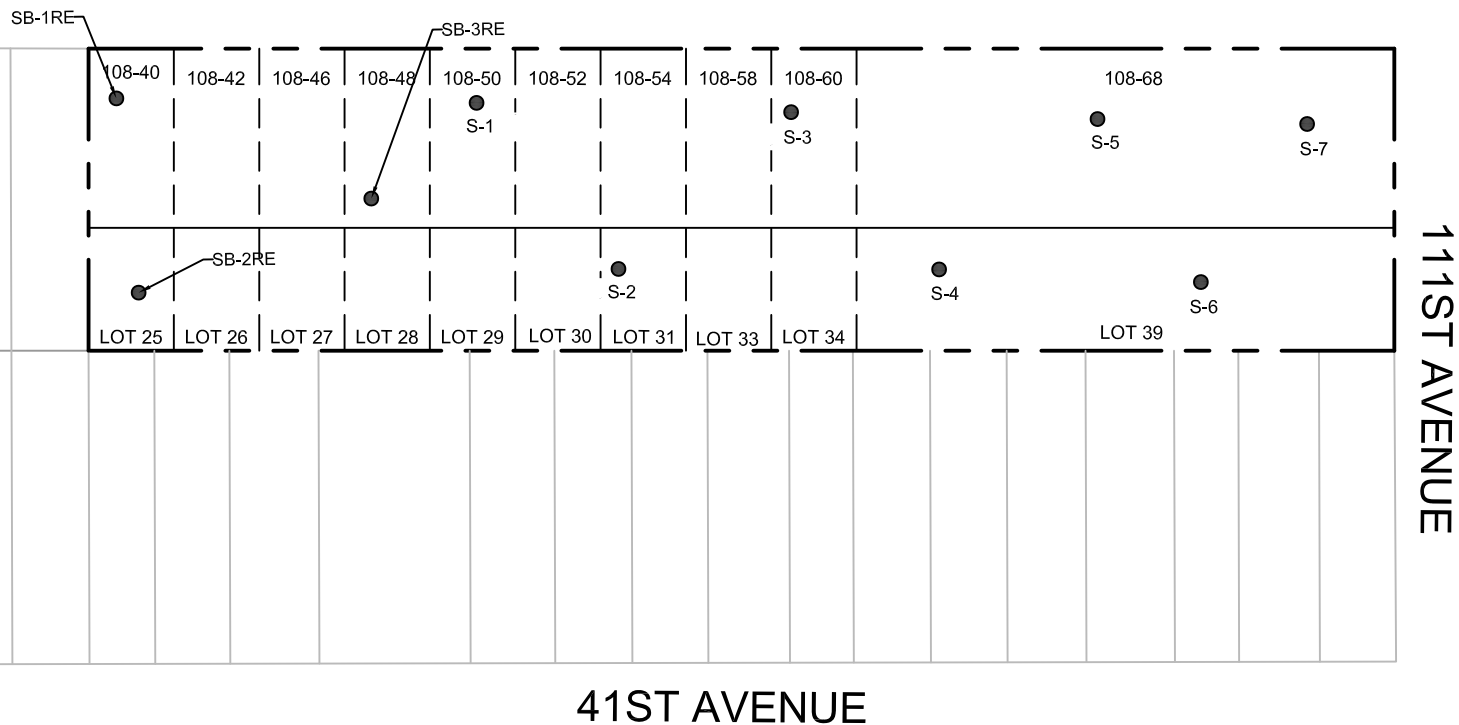


	<b>PREPARED BY:</b> <b>J.R. HOLZMACHER P.E., LLC</b> <i>The Third Generation of Excellence In Water Supply, Water Resources, Civil and Environmental Engineering</i> 3555 VETERANS MEMORIAL HIGHWAY, SUITE A, RONKONKOMA, NY 11779 PHONE # (631) 234-2220 FAX # (631) 234-2221 E-MAIL: info@holzmacher.com	<b>TITLE:</b>  <b>Encountered Tank Locations</b>  108-40 Roosevelt Avenue Corona, Queens, New York 11368	<b>DWN:</b> MFT	<b>SCALE:</b> 1" = 50'	<b>DATE:</b> 05/19/2021	<b>PROJECT NO.:</b> KangM 1802
			<b>CHKD:</b> MFT	<b>APPD:</b> JRH	<b>REV.:</b> 01/17/2022	<b>NOTES:</b> -
			<b>FIGURE NO.:</b> 7			





ROOSEVELT AVENUE



111ST AVENUE

41ST AVENUE

PREPARED BY:



**J.R. HOLZMACHER P.E., LLC**

*The Third Generation of Excellence  
In Water Supply, Water Resources,  
Civil and Environmental Engineering*

3555 VETERANS MEMORIAL HIGHWAY,

SUITE A, RONKONKOMA, NY 11779

PHONE # (631) 234-2220

FAX # (631) 234-2221

E-MAIL: [info@holzmacher.com](mailto:info@holzmacher.com)

TITLE:

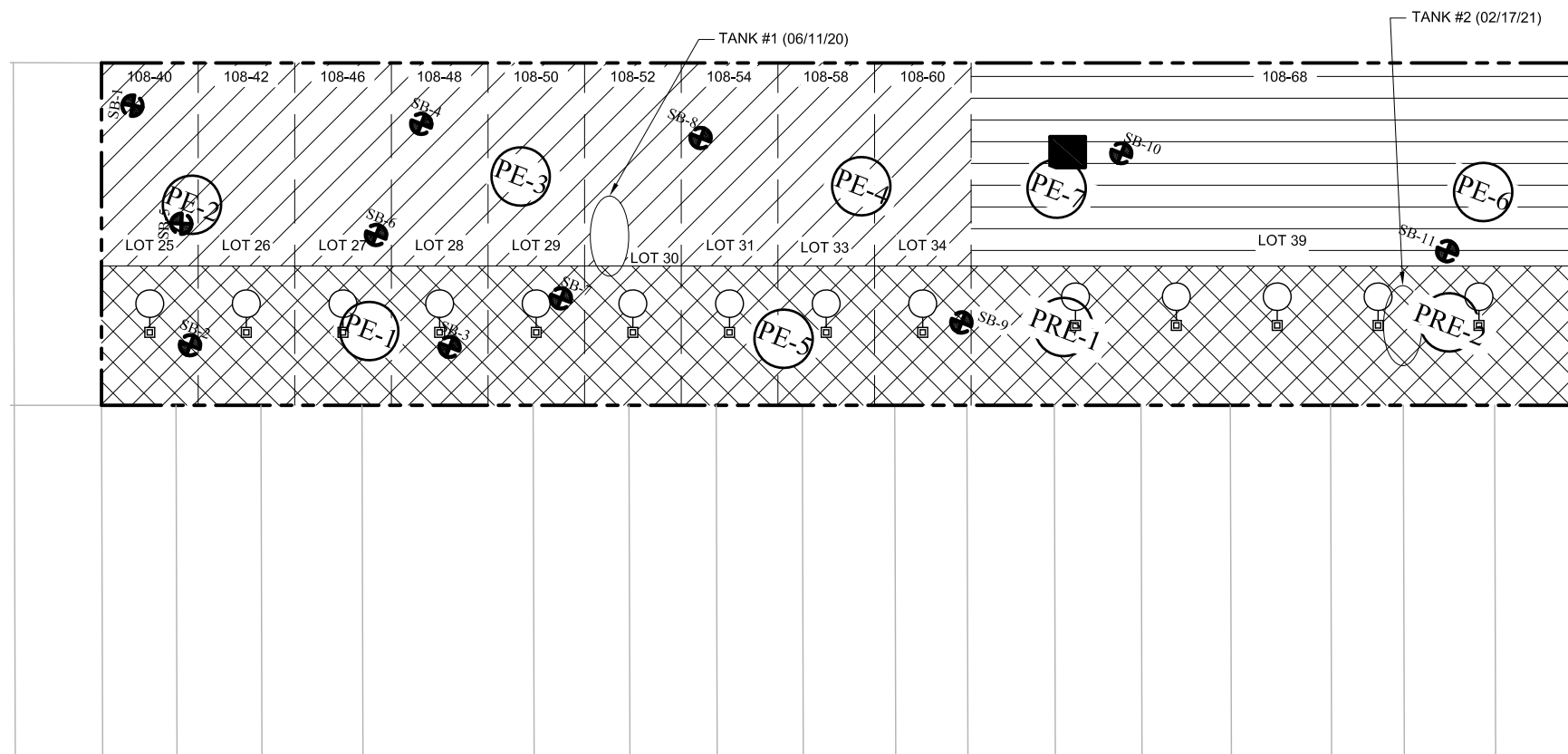
**Waste Characterization Sample Location**

108-40 Roosevelt Ave,  
Corona, New York

DWN: MFT	SCALE: 1:750	DATE: 01/19/2022	PROJECT NO.: KangM 18-02
CHKD: JRH	APPD: JRH	REV.: -	NOTES: -
FIGURE NO.: 8			





# ROOSEVELT AVENUE




111ST AVENUE

## LEGEND

ENDPOINT SAMPLES =  (PE-1)

PRE-CAP SAMPLES =  (PRE-1)

SOIL BORING SAMPLES =  (SB-1)

PREPARED BY:



**J.R. HOLZMACHER P.E., LLC**

*The Third Generation of Excellence  
In Water Supply, Water Resources,  
Civil and Environmental Engineering*

3555 VETERANS MEMORIAL HIGHWAY,  
SUITE A, RONKONKOMA, NY 11779  
PHONE # (631) 234-2220 FAX # (631) 234-2221  
E-MAIL: info@holzmacher.com

TITLE:

## OVERLAY MAP OF ENDPOINT AND SOIL BORING SAMPLES

108-40 Roosevelt Avenue  
Corona, Queens, New York 11368

DWN: MFT	SCALE: 1" = 50'	DATE: 05/19/21	PROJECT NO.: KangM 1802
CHKD: MFT	APPD: JRH	REV.: -	NOTES: -

FIGURE NO.:

9